

# Creu Casgliadau Creating Anti-Racist Llyfrgell Gwrth-Hiliaeth Library Collections

CYDWEITHIO, YMGYSYLLTU, A GRYMUSO · COLLABORATE, ENGAGE, AND EMPOWER

POWERED BY LAUREL CONSULTING

## 1

### Os ydych chi'n ymwneud â chaffael stoc If you are involved in stock acquisitions



> **Datblygu strategaeth caffael cydweithredol ac amrywiol:** Creu strategaeth sy'n ymgysylltu â holl aelodau'r tîm llyfrgell, gan gynnwys staff o gefndiroedd amrywiol, i nodi ac i gaffael adnoddau gan amrywiaeth eang o awduron, creaduriaid a chyhoeddwr. Bydd y dull cynhwysol hwn yn sicrhau bod casgliad y llyfrgell yn elwa ar safbwyntiau lluosog ac yn cynrychioli amrywiaeth fwy.

> **Develop a collaborative and diverse acquisition strategy:** Create a strategy that engages all library team members, including staff from diverse backgrounds, in actively identifying and acquiring resources from a wide range of authors, creators, and publishers. This inclusive approach will ensure the library's collection benefits from multiple perspectives and represents greater diversity.

> **Datblygu canllawiau caffael gwrth-hiliaeth:**

Cydweithredu â'ch tîm neu gymuned ymarfer ddigidol i archwilio a gweithredu canllawiau sy'n hyrwyddo methodolegau gwrth-hiliaeth.

> **Develop anti-racist acquisition guidelines:**

Collaborate with your team or a digital community of practice to explore and implement guidelines that promote anti-racist methodologies.



> **Adolygu a dadansoddi stoc bresennol:**

Cynnal adolygiadau a dadansoddiadau rheolaidd i nodi bylchau a sicrhau bod stoc eich llyfrgell yn gwasanaethu corff amrywiol o ddefnyddwyr.

> **Review and analyze current stock:**

Conduct regular reviews and analyses to identify gaps and ensure your library's stock serves a diverse body of patrons.

> **Uwchraddio perthnasoedd â chyflenwyr:**

Ymchwilio i reoliadau, ystyried gwahanol gyflenwyr sy'n cynnig dewisiadau amrywiol, a chyfathrebu â'ch chyflenwr presennol am bwysigrwydd cynrychioli eich cymuned.

> **Maximize relationships with vendors:**

Research regulations, consider various vendors offering diverse selections, and communicate with your current vendor about the importance of representing your community.



> **Eirioli dyraniad cyllideb:**

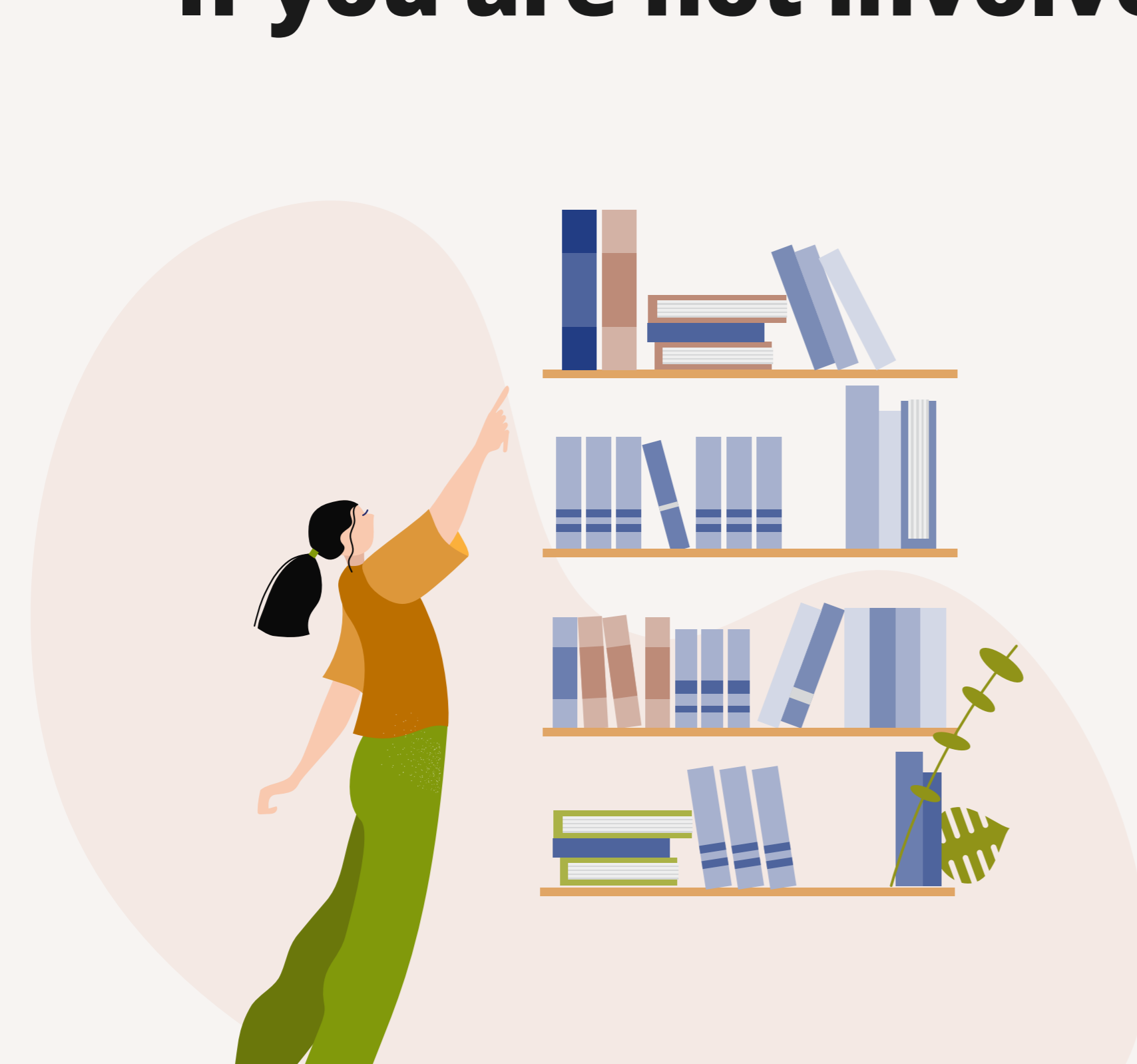
Cyflwyno'r achos dros gynyddu dyraniad cyllideb i reolwyr, awdurdodau lleol, neu gyrff ariannu, gan ddefnyddio'r Cynllun Gweithredu Gwrth-Hiliaeth a mewnwleidiadau o hyfforddiant.

> **Advocate for budget allocation:**

Present the case for increased budget allocation to management, local authorities, or funding bodies, using the Anti-Racist Action Plan and training insights.

## 2

### Os nad ydych chi'n ymwneud â chaffael stoc If you are not involved in stock acquisitions



> **Darparu argymhellion:** Defnyddiwch eich gwybodaeth am ddiwyllianau amrywiol i awgrymu deunyddiau perthnasol ar gyfer caffael.

> **Provide recommendations:**

Use your knowledge of diverse cultures to suggest relevant materials for acquisition.

> **Cymryd rhan mewn gweithgareddau ymgysylltu â'r gymuned a lleadaenu:**

Ymgysylltwch â defnyddwyr o gymunedau ethnig lleiafrifol i ddeall eu hanghenion a'u diddordebau

> **Participate in community engagement and outreach activities:**

Engage with patrons from minority ethnic communities to understand their needs and interests.



> **Cefnogi digwyddiadau a rhaglenni:**

Trefnwch, cefnogwch, a chymryd rhan mewn gweithgareddau ymgysylltu â'r gymuned sy'n gysylltiedig â chaffael stoc gwrth-hiliaeth.

> **Support events and programming:**

Organize, support, and participate in community engagement activities related to anti-racist stock acquisitions.

> **Cydweithio â chydweithwyr:** Rhannwch weledigaethau a gweithio'n agos gyda chydweithwyr sy'n ymwneud â chaffael stoc.

> **Collaborate with colleagues:**

Share insights and work closely with colleagues involved in stock acquisitions.

