



Cotobridge Grammar
School

Cotobridge Grammar
School



Prospectus

School Governors.

Representatives of the Glamorgan County Council :

County Councillor JOHNSON MILES, *Chairman*.
County Alderman SIR WILLIAM JENKINS, M.P.
County Alderman W. ARTHUR JONES
County Councillor P. J. SMITH
County Councillor T. ROGERS
W. J. DAVIES, Esq.

Representatives of Jesus College, Oxford :

J. HODGKINSON, Esq., M.A., Fellow of Jesus College, Oxford
H. J. GEORGE, Esq., M.A., Fellow of Jesus College, Oxford
The Rev. Canon D. T. GRIFFITHS
THOMAS JENKINS, Esq., J.P.

Headmaster :

J. I. REES, B.A. Wales. M.A. St. John's College, Cambridge.

Assistant Masters :

J. D. OWEN, B.Sc., Wales.
M. B. EDWARDS, B.A. Wales.
T. HUGHES, B.A. Wales.
F. C. RAGGATT, M.A., Bristol.
G. H. BAUGH, B.A. St. Catherine's, Oxford, B.A. London
W. C. P. HARFOOT, B.A., Late Exhibitioner Keble College, Oxford
A. B. CODLING, M.A. St. Edmund Hall, Oxford
T. H. C. WALKER, B.Sc. London.
G. H. BROWN, B.Sc. London.
A. G. REED, B.A., Late Scholar of St. John's College, Oxford.
D. L. JONES (*Handicraft*)
D. ROGER JONES, Premier Award at Crystal Palace, 1927-28 (*Orchestra*)

Cowbridge Grammar School.

THE date of the foundation of Cowbridge Grammar School is a subject of controversy amongst historians and antiquaries. Whatever theories may be adduced to prove its existence before the Norman invasion, it is at least certain that the history of the school shows few lacunas after Elizabethan times. The School was restored and re-endowed in 1685 under the will of Sir Leoline Jenkins, an alumnus of the School, who, apart from having been Secretary of State, had been Master of Jesus College, Oxford.

Since 1919 the School has become a grant-earning School under the management of a Board of Governors which consists of members nominated partly by Jesus College, Oxford, and partly by the Glamorgan County Council.

SITUATION AND BUILDINGS.

The School stands in the quiet retreat of Church Street, away from the noise and bustle of traffic passing along the main road from London to West Wales. The ancient borough itself stands in the centre of the beautiful Vale of Glamorgan, which has the same appeal to-day as it had for Thomas Carlyle. Statistics prove that Cowbridge is one of the healthiest boroughs in Wales.

The School Buildings form three blocks. The main building contains classrooms, chemistry laboratory, one changing-room with wash-basins and two shower baths, assembly room, dining-room, dormitories and boys' baths. The dormitories are light, airy and centrally heated. The Headmaster's house forms part of the main building.



Old Hall

RELIGIOUS INSTRUCTION.

Religious instruction in accordance with the principles of the Christian Faith is given to every form in the School. The first and second forms are for one term in the year divided into sets in order that those boys whose parents so desire, may be instructed in the Catechism, while the remaining set carries on with its normal study of the Bible. The School is not bound by any particular religious body; exemption from school prayers is allowed on receipt of a special request from the parent, without incurring the danger of the loss of any advantage or emolument out of the endowment of the Foundation.

PREPARATION FOR CAREERS.

Boys who have chosen a career have their later School work directed to that end, while boys who are doubtful about their future have the assistance of a Careers Master, who makes it his business to collect essential data about every kind of career.

GAMES AND RECREATIONS.

Cricket and Rugby Football are the principal School games; some Hockey is also played.

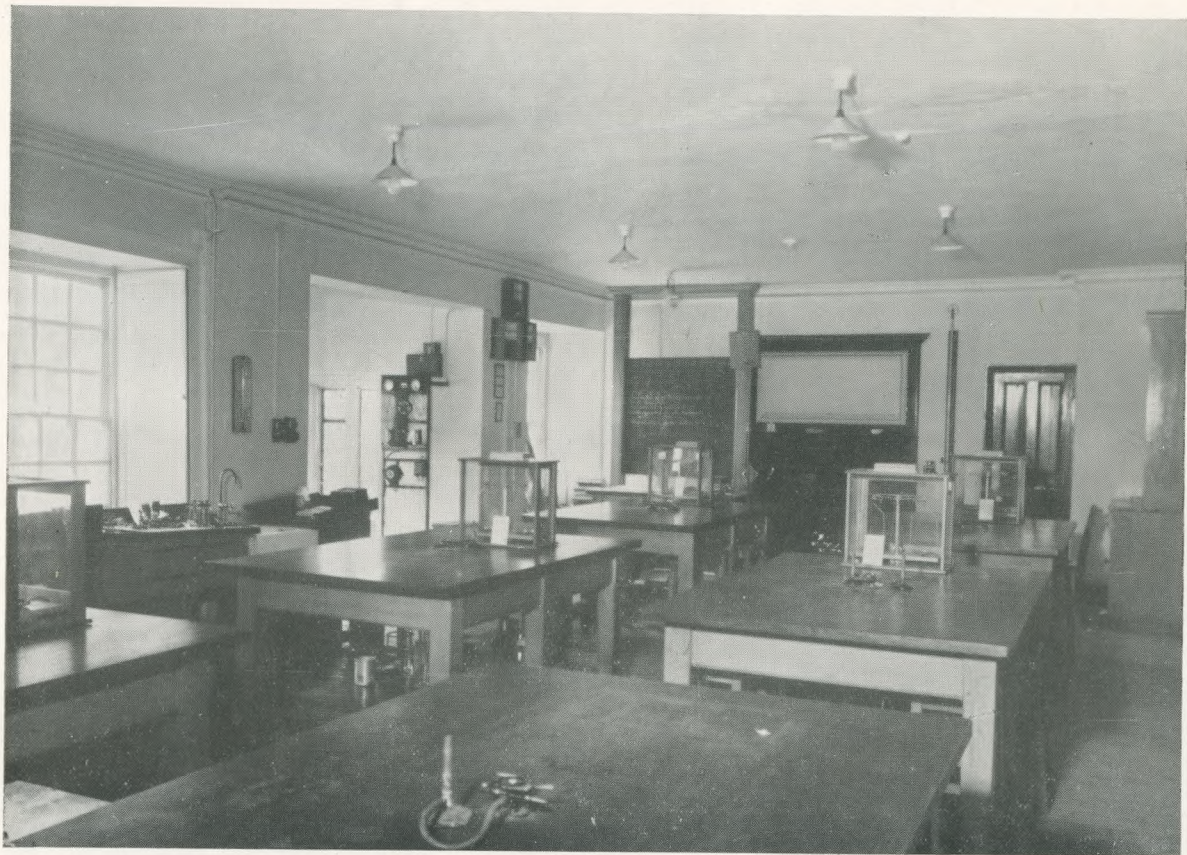
The School possesses two Lawn Tennis courts, one grass and one hard.

Fives can also be played in open-air courts. Extra classes in Gymnastics are held for Seniors and Juniors in the Winter Terms.

There are facilities for Swimming at the Corporation Swimming Pool which is reserved at special times every day in the Summer for the School.

The Rifle Club which is a member of the National Rifle Association, functions in the Summer Term.

No boy is excused Games unless he produces a Medical Certificate stating his unfitness to participate.



The Physics Laboratory

DIETARY.

The kitchen department in the Boarding House, is under the supervision of a Lady Housekeeper who is specially trained for her duties.

The timetable for Boarders' meals is as follows :

Breakfast	8.0 a.m.
Lunch	12.40 p.m.
Tea	5.30 p.m.
Supper	8.15 p.m.

The food is varied, well cooked and served. The meat is procured locally, while all vegetables are supplied from the School kitchen-garden.

As the School authorities believe these meals to be ample for the needs of the boys, Tuck is only allowed at tea, and then should be confined to cake, eggs, jam, fruit etc.; tinned foods are not allowed.

SCHOOL SOCIETIES.

DRAMA.

The School has a strong dramatic tradition and performs one play a year, to which parents and guests are invited.

In the Lent Term inter-House dramatic competitions are held in which the plays are chosen, produced and acted by the boys.

MUSIC.

Orchestral classes are held under a trained instructor; no extra charge is made for membership.

OTHER SOCIETIES.

These include the Literary and Debating and Scientific Societies. Boys who are interested in photography are allowed the use of the dark room, attached to the Physics laboratory.



The Gymnasium.

ADMISSION.

The School is open to all boys of good health and character who have attained eleven years of age; special permission of the Governors must be obtained before a boy under eleven can be admitted. Candidates for admission must pass one of two entrance examinations in English and Arithmetic, (1) the Glamorgan County Council's Entrance Examination to Secondary Schools; or (2) a similar examination, set by the Headmaster.

Older boys can also be admitted; (1) a boy who has attended a similar school, recognised by the Board of Education can be admitted by transfer; (2) a boy who has attended a private school must prove his fitness for admission, in an examination under the direction of the Headmaster, graduated according to the age of the boy.

Notice of all such examinations is published in the Press.

SCHOLARSHIPS FOR BOARDERS.

One Boarding Scholarship of £20 per annum is offered by the Headmaster on the results of the County Entrance Examination, provided that (1) candidates reach a sufficient standard, and (2) that the holder of the Scholarship remains in the School as a Boarder until he is at least sixteen years of age. It is subject to forfeiture if progress or conduct is unsatisfactory.

LEAVING EXHIBITIONS.

All pupils of the School are eligible to compete for Scholarships, Exhibitions and Grants awarded by the Board of Education or by the County Council.

There are a number of exhibitions closed to boys of this School who intend to proceed to the Universities, which are awarded on the results of the Higher Certificate Examinations. The maximum sum awarded to boys proceeding to the University of Wales is £45, to Oxford £60.

FEES.

(To be paid in advance at the beginning of each term to the Headmaster).

Tuition Fees £7 10s. 0d. per annum (or £2 10s. 0d. per term).
(This is the maximum figure; the actual amount payable will depend on the income of the parent or guardian).

These fees cover all subjects of instruction in the approved curriculum including the use of apparatus and mathematical instruments, except text books, which will be lent free of charge only to pupils resident in the County of Glamorgan, excluding Rhondda.

ADDITIONAL FEES FOR BOARDERS.

Board	£55 0s. 0d. per annum.
Laundry	£1 1s. 0d. per term.
Games	10s. 0d. per term.

An extra fee of £1 8s. 0d. a term will be charged for instruction in the piano and violin, if arrangements for such instructions are made.

The only other charges are in re-payment of disbursements made on behalf of the pupil, e.g., Doctor's fees, chemist and tradesmen's accounts, etc.

WITHDRAWAL.

Notice of withdrawal must be made in writing to the Headmaster a term in advance. Otherwise the pupil's name will be entered on the School list for the ensuing term and full fees for a Term must be paid.

Allowances cannot be made for temporary absence from School.

BOARDERS' LEAVE.

Boarders are allowed leave three or four times a term, if possible on Sunday, to enable them to visit their parents or friends; such leave can only be given on a written request from the parent.

Parents, or their nominees, are solely responsible for the health and welfare of boys during leave.

LIST OF CLOTHES, etc.

- 1 Best Suit for Sundays; **BLACK** Coat and Waistcoat, Long Grey Trousers
 - 2 Suits for ordinary wear
 - 1 Mackintosh; 1 Overcoat
 - 3 Neckties (1 black)
 - 12 Collars (at least three Eton, remainder soft)
 - 3 Shirts (shirts must **not** have collars attached)
 - 3 Pairs Drawers
 - 3 Under Vests
 - 6 Pairs Stockings (or Socks)
 - 12 Pocket Handkerchiefs
 - 3 Pairs Pyjamas
 - 1 Dressing Gown
 - 1 Pair Slippers
 - 4 Towels (rough)
 - 2 Pairs Sheets (single Bed) and 3 Pillow Slips
 - 3 Pairs Boots or Shoes
 - 1 Pair Football Boots (Michaelmas and Lent Terms)
 - 1 Pair Cricket Boots (Summer Term)
 - 1 Pair Football Knickers (blue)
 - 1 School Football Shirt
 - 2 Pairs School Football Stockings
 - 1 School Cap
 - 1 or 2 Pairs White Flannel Trousers
 - 2 White Cricket Shirts
- | | |
|---|---------------------------|
| } | Obtainable from :— |
| } | Messrs. E. Roberts & Co., |
| } | Kingsway House, Cardiff |
| } | Summer |
| } | Term |
- Brush and Comb, Sponge, Washing flannel, Tooth Brush, Nail Brush,
Sponge Bag, Rug
- Wooden Tuck Box
- Prayer Book with Hymns Ancient and Modern
- Bible, good print (Revised Version preferred)
- Small Hand-bag to hold night clothes, etc., on the first and last days of term.

The School cannot be responsible for all Clothes, Boots, Shoes, etc. that are **not plainly marked**. A Clothes list must be enclosed in Trunk each Term.

D. Brown & Sons, Printers Cowbridge, Glam.

