

Y Ddolen

Linking the Puget Sound Welsh Community

Hydref, Tachwedd, Rhagfyr 2023 Volume 41, Issue 4 October, November, December 2023

Mark Your Calendars!

Saturday, November 11th 2-4PM
Drunken Daffodil Virtual Pub Meeting via Zoom

Saturday, December 9th 1:30-3PM
PSWA Annual Christmas Party & AGM

Sunday, December 17th 1-4PM
South Sound Group's Annual Christmas Luncheon (Cinio Nadolig)

January 31st 2024
2024 Membership Dues are due!

For PSWA Christmas Party & AGM carpooling, address and driving instructions, and potluck information please RSVP to:

membership@PugetSoundWelsh.org

For South Sound Night Out Cinio Nadolig, please RSVP to:

southsound@PugetSoundWelsh.org

We look forward to seeing you!

- ❖ Members interested in contributing to PSWA as a Board Member, Contact President@PugetSoundWelsh.org
- ❖ Members interested in co-editing *Y Ddolen* for one or two issues annually. Contact newsletter@PugetSoundWelsh.org



MARI LWYD.
An Ancient Welsh Christmas Custom.

THE CHALLENGE:
O'r wyf yn dilynio
All blaetha en-
glynion,
O'r rhwyd i'n
stebion - nos
hau.

THE REPLY:
Mae yna wyth
fathion,
Syl'n ondio en-
glynion,
Nhw'n muddio
chw'to yllau -
nos hau.



President's Hello October 2023

Croeso to the red and orange of Fall!

Every Wednesday I take Welsh lessons by Zoom. This is my third year in level 1. But some things are finally sticking! Croeso—such a nice word to say welcome and thank you.

ZOOM PUB The Drunken Daffodil opens again on Saturday, November 11th 2-4PM. We welcome a member of the West New England Welsh Association as guest speaker who will regale us with the gripping story of the Peace Petition, signed by 40,000 Welsh Women, which was brought to America in 1923. This was an astounding effort by women all around Wales to get their sisters' names on a document that was delivered to President Woodrow Wilson. **Perhaps your relative is listed on this historic document, recently returned to the National Library of Wales.** The West New England Welsh Society is helping with the 100th celebration of the Peace Petition. Puget Sound Welsh Association and Côr Cymry Gogledd America (North American Welsh Choir) members Ellen Webber, Joel Ware, Jane Reynolds, Tammy Fitting, Rebecca Perkins and Mary Lynne Evans saw the chest with the petitions this past summer in Aberystwyth. The Zoom Pub will have discussion and drinks (BYOB) as usual. You will get an email invitation as we get closer to the date **if you are a member and on our list.**

HOLIDAY PARTY December 9th, 1:30- 3:00 PM. Potluck and Wassail. The season of Christmas, wassail, and good fellowship is fast approaching. We will meet at the lovely home of Alex and Heather Weinert. The event will feature a potluck luncheon, hymn and carol singing, holiday wishes, and general merriment with a visit from the Mari Llwyd. We have scheduled this for earlier in the day so driving in the dark is reduced. We will efficiently incorporate our Annual General Meeting, necessary to maintain our nonprofit status. It will be short! Again, the invitation will be sent to you with address and driving directions, and potluck news.

ST. DAVID'S DAY 2024 Your board is planning ahead!! PSWA has celebrated St. David's Day for over 125 years. Traditionally, we have had a formal concert in a church. However, the board has been discussing the sustainability of this tradition. Rental rates of churches and travel costs for musicians have risen vastly since COVID. In the past, we have had generous donations at the door and wonderful te bach contributions from the members. Board members have given hours of their volunteer time to make sandwiches and staff the tea, have given flowers and decorations free gratis, have set up and cleaned-up. Now, however, janitor fees are sometimes required. Even though we generate some revenue, the event costs us close to \$1000 over our profits. Our organization's treasury sits at around \$6000 now. This is enough for six years of St. David's Day, and no other activities. Clearly this is not sustainable. We are thinking of different ways to celebrate in 2024. Perhaps something like this: a community venue, rather than a church. Instead of a formal concert, a noson lawen and potluck luncheon. Mingling and chatting would be the order of the day. After the dessert has been served, we would pay tribute to St. David, encourage members to offer a noson lawen presentation if they wished, and have a small Gymanfa Ganu (hymn singing). Your thoughts on this? Please email me at President@pugetsoundwelsh.org. We have some time to plan and budget.

NOT JUST PUGET SOUND In the past couple of years, our activities have attracted participants from across the United States, Canada, and even Wales (Chris' cooking show was an international smash). We have reached out to Welsh folk in the Almira area with their pioneer cemetery and residents of the Kitsap Peninsula. We have members from Black Diamond, some are from Bellingham, the San Juan islands, Olympia, Chehalis and south to Portland. Some are far flung—New York City and Wales. Zoom makes it possible to keep in touch in a new way. We are not just from Puget Sound. We are Washingtonians and beyond. But Welsh-associated we all are. We are pleased you have join us. You enrich our lives. Please invite others. We are open to all.

Questions regarding the Zoom Pub or Holiday Party/AGM: contact Ellen at membership@pugetsoundwelsh.org.

January is our deadline for dues! We exist through your largess and involvement. Please clip the coupon at the end of this newsletter and send your dues to **PSWA PO Box 98131 Lakewood, WA 98496.**

Talk to you soon, I hope,

Mary Lynne Evans, President

South Sound Night Out of Hwyl

Sunday, October 15th Burs Restaurant and Lounge. 5:30pm. 6161 Steilacoom Blvd SW, Lakewood 98499.

Sunday, November 19th at Manic Meatballs. 5:30pm. 14815 Union Ave SW, Lakewood, WA 98498.

Sunday, December 17th - Christmas Luncheon (Cinio Nadolig) - 1:00-4:00 at our home in Lakewood. Welsh-themed Potluck/gift exchange (inexpensive). Past gifts included Welsh cheese, Taffy, books, ornaments, home baked foods, recipes, wine.

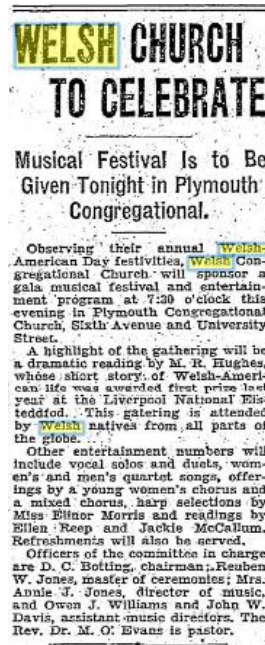
Sunday, January 14th Burs Restaurant and Lounge. 5:30pm. 6161 Steilacoom Blvd SW, Lakewood 98499.

Please RSVP to southsound@pugetsoundwelsh.org by at least 24 hours before the event to get an approximate count. You will be sent the address and directions for the Christmas Luncheon at Chris's home after you RSVP.



Croeso, Eira!

Proud Nain, Gwen shown here. Born September 28th to Gwen's daughter, Morgan Weinert.



Seattle Daily Times:
March 15, 1930

Miscellaneous Contributions

-Heidi Hiatt

On Sunday, July 9th I attended the Skagit Highland Games in Mount Vernon. I did not expect to see anyone that I knew, but actually saw a lot of familiar faces that day and made new friends. As I walked past one performance tent, I saw our own Eric Bowen ducking out the door. I learned that he'd just performed and his wife Sally was going to perform at 4. Sally has a wonderful presence, weaving stories and poetry in with song. Because it was the end of the day, Sally wasn't given much time for her set, but it was still well worth it. It's always a treat to hear the Bowens perform at PSWA events. Seeing them in another venue reminded me that they truly are a power couple when it comes to music and storytelling.

There have been some notable finds in Wales lately:

- Three treasure hoards and two groups of graves dating back to the Bronze Age and Roman times were found in South Wales, <https://www.archaeology.wiki/blog/2023/07/17/treasure-found-in-south-wales-and-powys/>
- 3000 Roman coins were discovered in the Conwy Valley, <https://www.msn.com/en-gb/news/world/hoard-of-nearly-3000-roman-coins-uncovered-in-conwy-valley-by-detectorist-friends/ar-AA1hVSTz>
- Have you heard of Castle Bank, the Middle Ordovician period, or of the ocean that once covered much of Wales? Check out the astounding fossils discovered at Castle Bank this year, <https://www.theguardian.com/science/2023/may/01/couple-unearths-one-of-worlds-greatest-fossil-finds-in-mid-wales>

Welsh Christmas & New Year Customs

-by Laura Lovell

Wales has some of the most unique Christmas traditions to offer, some dating to pre-Roman times, or before there was a Christmas!

One lovely custom is the Plygain service on Christmas Eve. Actually, it is celebrated very early on Christmas Day, usually between the hours of 3 a.m. to 6 a.m. People get up and sing Welsh Christmas carols, sometimes as solos, and often in small ensembles.

Celebrants bring many candles to decorate the church, as well as boughs of greenery and holly branches. The emphasis is primarily on the singing, rather than religious ceremony or preaching, similar to a Gymanfa Ganu. The quality of the music and the singing is somewhat competitive.

Until recently, only men performed. Some of the carols were written specially for the Plygain service, and only those in the carol author's family were allowed to sing it. The singing concludes with a very short religious service and then people are dismissed to enjoy Christmas Day with family and friends.

Not everyone is in church singing on Christmas Eve, however. Some spend that night at toffee-making parties, presumably not without some singing. I have not ever made toffee myself. I Googled recipes and found numerous ones for "Easy delicious toffee." A question to those who might know: Does it take hours? This was a fun social occasion, rather than a work session, I am thinking.



Mari Troellog of Caerffyddin

Dydd Calan (New Year's Day). The children go door to door and householders give them sweets or money [Calennig (small gift)] similar to our Trick-or-Treat. In Cwm Gwaum, they do this on January 13th because this small community in Pembrokeshire stuck with the Julian calendar, while most of the Western world changed to the Augustine Calendar, which we use today.

And of course, we have to include PSWA's favorite, the Mari Lwyd, or the Gray (or Pale) Mare. She is a ghostly looking horse, consisting of a horse's skull carried on a pole that is covered with white fabric. She's decorated with flowers, ribbons and bells, and usually has Christmas balls for eyes. The person who carries the pole has somewhat limited vision and thus needs a wrangler to lead. There is usually a company of rowdy people whose job is to stir up mischief and of course, to sing. The Mari comes to the door and demands entry in verse, and the people inside issue a refusal, also rhymed. Whoever lasts longest wins. It's usually the Mari's team, because they have had time to prepare, and also because it's good luck for the denizens of the house to welcome her inside.

Once there the team causes as much random "horseplay" as they can, and then on to the next house (or pub), which is more common today. Interestingly, Wikipedia identified the Mari Lwyd as a South Welsh custom, but today it's mostly done in North Wales.

19th century Pembrokeshire Wren House



Sadly, the custom of the Wren boys is no longer practiced in Wales, but I am including it because it is still done in the south of Ireland with some differences. In Wales on January 6th, men would capture a wren, cage it, and then carry it door to door collecting money or soliciting food and drink. *[Editor's Note: Here are links to read more about the Hunting of the Wren Hela'r Dryw tradition in Wales* <https://torstone.org/pagan-life/welsh-winter-traditions-part-ii> and <https://trac.cymru/en/hunting-the-wren/>]



Like the Mari Lwyd, it is thought to be of pre-Christian origins, because the wren is associated with the Druids in some nebulous way. It is also thought by some to be the King of Birds. This photo is Irish, because I couldn't find a Welsh one, but it gives you the idea.

And finally, here's an extinct Christmas custom no one will much mourn. On St. Stephen's Day (Boxing Day), young men would whip the arms, or sometimes the legs, of young unmarried women until they bled. I don't know why, but they better not try it now. It was called Holly Beating, and all I can say is that some old time-honored things die out for a reason.

No matter how you celebrate the season, I wish you all peace, joy and merriment!

[Editor's Note: *Cyflath* is the name for homemade Welsh toffee. You can find the recipe at www.therecipehunters.com]

Toffee pulling: <https://youtu.be/b4rsxU5pQaM>

Note From The Editor: Gomer Evans Update

Sincere apologies to Sherrie Evans and family of Gomer Evans for the mistake in the 3rd Quarter Edition of Y Ddolen.

From Sherrie Evans: (Gomer's) father's name was Gomer Evans, Sr. It was his father, Gomer Sr. who was employed at the Black Diamond and was the Fire Safety Officer, entrusted with the safety of the workers. Both his father and mother (Alice Hughes) came from Wales. They met in Black Diamond and raised nine children, my dad being #6. It is true that my father (and his) were both larger than life characters.

My father served as the youngest councilperson in Black Diamond, the Chief of Police, and also as Mayor. He was a past Master in the Masonic Lodge, named after him in 2017 as the Gomer Evans Masonic Center. In 2018, the City of Black Diamond named the street in front of his home Gomer Evans Jr. Drive. He was an avid member, and Maintenance Team Lead, for the Black Diamond Historical Society and museum. In that role he was instrumental in getting the Coal Miner's Honor Garden and Statue in place, as well as the Black Diamond History Express locomotive that so many enjoy.

FIND THE WORD IN THE PUZZLE

Words can go in any direction.

Words can share letters as they cross over each other.

HYDREF (*autumn/October*)

GWISG (*costume*)

PWMPEN (*pumpkin*)

SGERBWD (*skeleton*)

GIWER (*squirrel*)

ANRHEGION (*presents*)

CYNHAEF (*harvest*)

ANGYLION (*angels*)

CANHWYLLAU (*candles*)

TORCHAU (*wreathes*)

UCHELWYDD (*mistletoe*)

GAEAF (*winter*)

TACHWEDD (*November*)

TYRCWN (*turkeys*)

RHEWLLYD (*freezing/frosty*)

CALENNIG (*New Year celebration gift/"the first day of the month"*)



<https://www.love-wrexham.com/2022/10/13/termau-yr-hydref-a-calan-gaeaf-words-for-autumn/>

<https://welearnwelsh.com/blog/welsh-christmas-greetings-vocabulary-sayings/>

A Welsh Museum In Nebraska? And We Contributed To It?

- by Mary Lynne Evans

The bus carrying board members from the North American Festival of Wales organization stopped in front of an unassuming building: the Great Plains Welsh Heritage Center. A cadre of smiling museum “ambassadors” ushered us in for a miner’s lunch, served in tin buckets, then took us on an eye-popping tour of the museum. Gwenith Closs-Colgrove, President of the Project, escorted us. <https://greatplainswelsh.org>



This building and the contents therein are a living tribute to the Welsh immigrants who arrived in Nebraska to take advantage of the Homestead Act of 1862. These hardy folks were able to achieve their dream of farming their own land, and much more of it than they could ever amass in Wales. They left a significant mark on the life of the area. Their descendants have preserved their old schoolhouse, supported the Bethel Cemetery, and most notably gathered and built this fine museum.

It was with great pride that I noted that the Puget Sound Welsh Association was well represented in the collections and displays. Thanks to Alan Upshall, PSWA past president and archivist, we had boxes and boxes of historical documents photos, music, and programs from the middle of the 19th century through today. These documents are stored in a climate-controlled room with the latest museum technology. They are available for scholars and researchers upon request.



A gift to us from The Black Diamond Historical Society & Museum via a Welsh family in Black Diamond, WA, this photo shows a lovely piece of women’s clothing. Dated from the 1950’s, the suit is made of Welsh wool and was carded, prepared, dyed and spun in North Wales. The pattern is stylized plaid of red, magenta, shades of brown and tan. It consists of a pencil slim skirt, a hip length vest with golden frog closures and a finely tailored suit jacket. All pieces are lined and of substantial weight.

Another PSWA contribution, also in the main gallery, is an historical John Speed map of Wales. John Speed (1551-1629) was an English cartographer and historian whose work was amongst the finest in the British Isles at the time. At royal direction, Speed collected existing maps of the “entire Kingdom.” The second, revised and augmented edition (1623) is in ten Chapters, of which the first four are the maps. Our map, from Chapter 2 “containing the Counties of Wales,” is hand drawn, hand colored, and museum quality framed.

Preservation of our common Welsh heritage depends on each of us. May I encourage you to survey your belongings for items which may be of historical significance?

Our newsletters, like this one, are considered valuable to both the Washington State Historical Society and to the Great Plains Project. Even though we strive to use email, we still have publication, mailing and archive costs. We would gladly accept funds earmarked solely for the continued publication of the newsletter. Any amount is gratefully accepted. If you would like to sponsor one of our newsletters, please email President@PugetSoundWelsh.org.

Wales In International Sport

FIA World Rally Championship – **Elfyn Evans** (Toyota) remains in second position with 186 points.

World Cup Rugby 2023 - 7th ranked Wales lost to Argentina in the Quarter Finals after a 4-0 record in Pool C. Dan Biggar retires, setting up Sam Costelow to fill the number 10 jersey for 2024 Six Nations. *Former Wales prop Rob Evans and hooker Kirby Myhill have signed with newly formed Miami Sharks in America’s Major League Rugby.

EURO 2024 - Wales FA (the national football team) came out on top of Croatia 2-1. Wales must beat Armenia and Turkey for qualification in next summer’s tournament. ■Armenia V Wales November 18th 6AM (PDT), ■Wales V Turkey November 21st 11:45AM (PDT). **Look for FaceBook Group postings and/or emails for watch parties.**

Men’s Road Cycling – **Josh Tarling** wins gold in the individual time trial at the European Road Cycling Championships.

Thomas Rhidian Lawrence (1938 – 2023)

-Alan Upshall

Sadly, we have to record the passing of Rhidian. He was raised in Trefin, a small village about 15 miles from Haverfordwest on Pembrokeshire. He went to Aberystwyth University from where he graduated with a first class honors Bachelors degree on Physics and Mathematics, followed a Ph.D in Physics. On graduation he left Wales for a position at Toronto University, and in the succeeding years he developed a career in laser applied physics. He moved from Toronto to The Lockheed Missiles and Space Company, in Alabama. In this time he worked on sensitive projects that required national security clearance.

He moved to Seattle in 1987 for a position at Spectra Technologies. In 1987 he also arrived at the doorstep of the Seattle Welsh Choir and was warmly welcomed, especially by the tenors for his quality voice. He became a fixture in the choir with both his singing and his often required arbitration on the pronunciation of some Welsh words. He did not seek any limelight but was always very willing to help where necessary. For example, a month before the start of the National Gymanfa Ganu, which PSWA organized in Bellevue in 1994, we needed a new commemorative booklet to support the Grand Concert. Rhidian stepped in and did the project with a week to spare.

He was later diagnosed with Parkinson's disease which gradually constrained his activities until 2021 when he moved into assisted living in Kirkland. Regrettably he contracted Co-Vid which caused his death in hospice. While in hospice in his last hours the hospice staff played CD's of Welsh music which I had supplied and I was told that when he first heard the music he reacted and that he spent his last hours listening to a recording of The Bellevue Grand Concert sung by the Llanelli Male Choir and a recording by The Seattle Welsh Choir of one of their Christmas concerts. Both recordings are compilations of Welsh song and verse. He loved his Welsh music and poetry. Rhidian was cremated and his ashes have been scattered on his favorite spot on Aberfelin Beach in Wales.



Autumn & Calan Gaeaf Customs & in Wales

Welsh Traditions of Autumn: <https://youtu.be/fMESwXSftHM>

Welsh Dragon stencils to download, print and use for pumpkin carving: <https://americymru.net/gaabi/blog/836/free-printable-welsh-pumpkin-stencils-for-halloween-dragon-patterns>

See back page photo of pumpkin carved using one of these stencils!

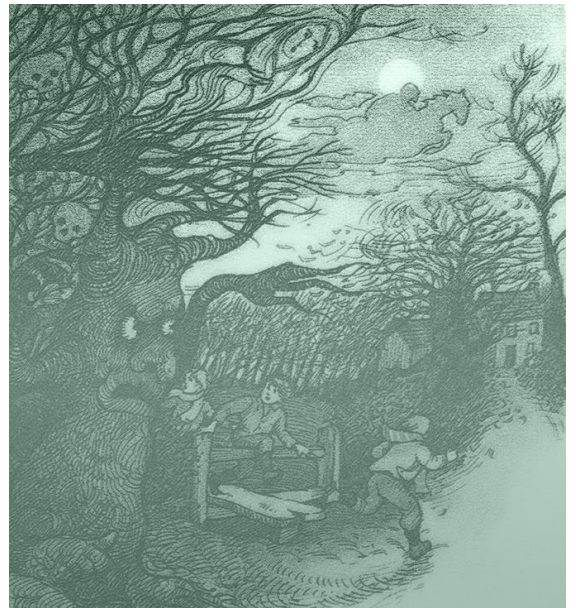
<https://www.bbc.co.uk/bitesize/articles/zbkdcqt> Hwch Ddu Gwta - 'The Tailless Black Sow' On *Noson Galan Gaeaf*, one of the men would put on a pig skin and chase the children home from the village bonfire (coelcerth). *Hwch Ddu* was used as a game to scare the children to get them home on time with fear of being eaten if they were the last one home.

*Adref, adref, am y cyntaf',
Hwch ddu gwta a gipio'r ola'.*

More Welsh spooky traditions and tales: <https://www.bbc.co.uk/news/uk-wales-46019969>

<https://museum.wales/blog/1857/Halloween-Traditions/>

<https://dunbrython.wordpress.com/2016/10/29/calan-gaeaf-traditional-customs-for-the-calend-of-winter/>



Iaith a Chymuned/Language and Community

-Eric Bowen

“Iaith a Chymuned” – Language and Community – is one of the slogans of the Welsh language movement, and my wife Sally and I, on our last trip to Wales, had the privilege of seeing what this really means.

“Beth ydy gennych chi i ddau Americanwyr ar goll [What do you have for two lost Americans]?” I asked the barmaid at Tafarn yr Angel in Llansawel.

The barmaid set us up with a pint of Brains; the sound of Welsh with an American accent attracted the curiosity of the locals, who welcomed us to sit at their cozy table. I briefly explained what had brought us here, considerably off the beaten track, then asked about life in their village.

“Mae tri chant ohonom yn y dre yma,” began one fellow; “There are three hundred of us in the town here, and we know each other down to the length of each other’s inseams.”

“What is it like living in a place so tight-knit? Do you ever feel a lack of privacy?” asked Sally.

The lady next to her weighed what may have seemed an unfamiliar idea, then elaborated on the local sense of community. “My family has lived here for five generations,” she said, “and we belong to the land and to each other. We may not always see eye-to-eye, but if one of us is in trouble, the rest rally around.”

“Have you ever been here before?” asked the man across the table from me.

“Actually, yes. I came through here on my bicycle 27 years ago, and stayed at a B&B called Glasfryn.”

“Oh! with Gloria Jones and her family.”

“Yes, I remember she had two children...”

“Amanda still lives here in the village. Dylan is in the armed forces in Afghanistan. But really, you must go say hello to Gloria. She’ll be hurt if you don’t.”

“What?! It’s been 27 years. She wouldn’t remember me.”

“An American, here, on a bicycle?! Of course she’d remember you!”

“Well, I’m not sure I remember where her home is...”

“Oh, she won’t be there now,” said our friend, glancing at his watch. “She’ll be on her way to play bingo at the Black Lion. In fact, if you leave now, you’ll catch her at the bridge at the bottom of the hill.”

Sally and I glanced at each other in wonderment. Well, we had had a good chat, it was getting on toward time to leave... and to see if the fellow was pranking us.

As we walked down the hill past the Black Lion, we could see a figure approaching in the early twilight.

“Noswaith dda,” I began tentatively. “Mrs. Jones? Eric Bowen ydw i, o’r Unol Daleithiau, ac arosais i yng Nglasfryn saith ar ugain mlynedd yn ol...”

“Do, rwy’n cofio atoch chi,” she replied, acknowledging she remembered me.

The folks in the pub had been right on all counts. Iaith a chymuned / language and community, indeed!

PSWA Board Members & Elected Officers

- Mary Lynne Evans, President
President@PugetSoundWelsh.org | 206-525-5864
- Joel Ware IV, Vice President/Co-Editor
Board@PugetSoundWelsh.org
- Bob Matthews, Secretary
Board@PugetSoundWelsh.org
- Ellen Webber, Membership Secretary
Membership@PugetSoundWelsh.org
- Gerri Parry, Member at Large/Webmaster
Webmaster@PugetSoundWelsh.org
- Karyn Davies, South Sound Night Out of Hŵyl/Events/Co-Editor
Southsound@pugetsoundwelsh.org
Events@pugetsoundwelsh.org
- Laura Lovell, Member at Large
Board@PugetSoundWelsh.org
- Gwen Weinert, Member at Large/Co-Editor
Board@PugetSoundWelsh.org
- Alan Upshall, Archivist
Archives@PugetSoundWelsh.org
- Chris Mooreddrall, Treasurer/South Sound Night Out of Hŵyl
Board@PugetSoundWelsh.org

We welcome your contribution of relevant articles, news, announcements, events, and photos:
Newsletter@PugetSoundWelsh.org

DEADLINE FOR NEXT SUBMISSION: January 20th

PSWA Membership/Renewal, Donations, T-Shirts, & Red Dragon Band CD

Annual memberships renew each January. Your contributions entitle you to a subscription to *Y Ddolen*, our wonderful quarterly newsletter, and provide vital support for our St. David's Day celebration and other activities through the year. In addition to our sponsored events, the Puget Sound Welsh Association acts as a valuable resource for anyone interested in Welsh culture, language, and music. Questions? Contact Ellen Webber.

Annual 2021 Memberships/Fees

- Individual (\$10) \$ _____
- Family/Couple (\$15) \$ _____
- Y Ddolen mailed to you (\$5) \$ _____
- Life (\$100) \$ _____
- Overseas Annual Postage (\$50) \$ _____
- Overseas Life (\$150) \$ _____

Membership is annual
from Jan 1 through Dec 31
Thank you for your prompt
renewal!

Donations

- General Fund Donation \$ _____
- Memorial Scholarship \$ _____
- Memorial Fund \$ _____ In Memory of (Name): _____

Retail Products - *prices include shipping/postage (\$15 if picked up at events)

- PSWA T-Shirts** Total number of shirts ___ x \$19.95 \$ _____
\$19.95* each. Indicate how many of each size and color:
Steel Green: ___ LG ___ XL *Limited quantities; Email for availability: membership@pugetsoundwelsh.org
Dark Green: ___ SM ___ MED ___ XL *Limited quantities of XL; Email for availability.
- Welsh Music CD** Total number of CDs ___ x \$15 \$ _____
Y Ddraig Goch, Traditional Welsh Folk music of Wales: \$15* each

Make check payable to PSWA

TOTAL ENCLOSED \$ _____

Membership Information (please print):

First Name: _____ Last Name: _____
Phone: _____ Email: _____

First Name: _____ Last Name: _____
Phone: _____ Email: _____

Mailing Address: _____



PSWA is a nonprofit, tax-exempt organization 501(c)(3). Contributions may be tax-deductible.
Please mail this form with payment to: **PSWA, PO Box 98131, Lakewood, WA 98496**



Y Ddolen | Puget Sound Welsh Association
PO Box 98131
Lakewood, WA 98496
www.pugetsoundwelsh.org

NON PROFIT ORG
US POSTAGE
PAID
SEATTLE WA
PERMIT No. 1996

ADDRESS CORRECTION REQUESTED



Join the PSWA Facebook Group! ❖ “Like” the PSWA Facebook Page!

Stay in touch with other members across the Puget Sound and Washington state, keep up to date with events and activities, and post relevant events/information to the discussion forum. Read interesting news and historical posts. Share what you find.

www.facebook.com/groups/pugetsoundwelsh

www.facebook.com/PugetSoundWelsh/



**Nadolig Llawn a Blwydden Newydd Da, i chi!
Merry Christmas & Happy New Year to you all!**