

Puget Sound Welsh Association to host 1994 National Gymanfa

By Carrie Fox and Alan Upshall

At the recent 62nd National Gymanfa Ganu in Wilkes-Barre, the Puget Sound Welsh Association (PSWA) officially became the standard bearer for the 63rd annual gathering of the North American Welsh to be held in Bellevue, Wash. Here's a thumbnail sketch of this lively society.

PSWA was formed in 1984 as a vehicle to bring Welsh groups of the area into a unified force. The Seattle Welsh Women's Club has a long history and was one of the cornerstones of the Seattle Welsh Presbyterian Church (1889-1956). In 1980 Dosbarth Cymraeg [Welsh Class] was formed. This group learned much of their Welsh pronunciation by singing and led to the founding of Cór Cymraeg Seattle. The three groups decided that it was time to coordinate their activities and work under one banner, a red dragon flag shaped as Washington State. In 1986, Band Y Ddraig Goch formed, followed by the folk dance group in 1989. The administrative board of PSWA is made up of members from each of the constituent groups and members at large.

The mission of PSWA is to promote and sponsor Welsh activities within the Puget Sound region. At that it has been most successful. Subscribers to the monthly newsletter *Y Ddolen* [The Link] number approximately 175 and there are over 600 names in the data base. Annually, a gymanfa is organized by Cór Cymraeg Seattle and is regularly attended by over 250 people. St. David's Day is celebrated with a concert jointly organized by the Association and the Seattle Welsh Women's Club. Bronn Journey, the society harpist, presents his own Christmas concert over two nights to satisfy the demand for tickets. Tim Dyck regularly directs the annual Bryn Sion gymanfa in Beaver Creek, Ore., has directed in Vancouver and Victoria, B.C., and has also recently directed the spring gymanfa in Delta, Pa. Potlucks and *nosonau lawen* happen frequently.

As well as these regular events, several Welsh male voice choirs have passed through and presented outstanding concerts. The last two choirs were from

More on the first National Eisteddfod

By Alan Upshall

The response from attendees at the Wilkes-Barre National Gymanfa Ganu to the innovation of an Eisteddfod next year in Bellevue, Wash., was incredible. If the response translates into entries we will have a fantastic competition. The original plans were formulated in a vacuum. We did not know what the response would be but we were prepared to try because we believe the eisteddfod is an essential part of Welsh culture. It also is an ideal medium to encourage our youth to become involved in their heritage.

The original concept was simple: three competitions, solo voice, solo instrument and choral, with no age limits. It seems as if this may be too simple and we are prepared to alter our plans dependent on the number and type of entries. For example, if there are several entries from youth vocalists we will make a separate competition for that group. Similarly for a specific instrument type, e.g., if we get several harp entries. We will, however, only generate a special group if there are three compatible entries. Yes, this will make the eisteddfod larger and we may have to hold preliminary rounds, but won't that be exciting! The more the merrier. We will just have to organize it. Clearly, we cannot set up the different categories now because it would be too restrictive. We will let contestants know well in advance if we need to set up specific groups. Don't forget to put your phone number on the entry form.

If you did not pick up your entry in Wilkes-Barre, a form can be obtained from Mari Wingate, 1339 Bellefield Park Lane, Bellevue, WA 98004. (For more details see our *September issue, page 7*.)

Come to Bellevue, Wash., in 1994 and display your Welsh talent.

Llanelli and Dowlais, both in South Wales. Triple harpist Robin Huw Bowen and the folk group Mabsant have been repeated visitors. This September the society hosted a reception for a Welsh trade delegation headed by Sir Wyn Roberts, Minister of State for Wales in the British Parliament.

In 1991, PSWA co-sponsored the first Northwest Welsh Weekend in conjunction with the Pacific Northwest Gymanfa Ganu Association. The success of the venture inaugurated the annual regional Welsh weekend which, in 1992, was held in Penticton, B.C., and in 1993 in Corvallis, Ore. (In 1994 the event will be held in Nanaimo, B.C.) The society and its clubs contribute to ethnic fairs and Celtic festivals. Band Y Ddraig Goch and Cór Cymraeg Seattle frequently perform at the Seattle Folk Life Festival and last summer the band played at the Duncan, B.C., Folk Festival.

Buoyed by the success of the Bothell Welsh Weekend, PSWA members decided it was time to bring "The National" to the area. A bid was accepted by the national committee in 1991 and the local group has been working since then to put the program together. The organizing committee for the 1994 National Gymanfa Ganu is headed by PSWA president Alan Upshall, a native of the Rhondda. Other members are Bob Matthews (vice-chairman and Sunday activities), Steve Ensley (treasurer and registration), Tim Dyck (entertainment), Wyn Morgan (brochure), Liz Heath (seminars and tours), David and Mary Powell (hospitality) and Brian Parry (logistics). The secretary is Gretta Upshall.

Over the next year, each issue of this paper will present aspects of the program with profiles of artists, news and registration details. Keep reading and begin to plan your holiday to Seattle around the National Gymanfa Ganu festivities over Labor Day in 1994.

Letters / Llythrau

Comments on

through the door.

Willac-Barre

The Sunday gymanfa,

Glamorgan's cricketers take

Hitting the high notes

An annual Welsh singing festival comes to Bellevue

By Philippa Kiraly

Welsh Festival of Singing

Meydenbauer Center
September 2-4

The sound of more than 1,000 voices singing Welsh songs will ring out Labor Day weekend, when America's 63rd annual national *Gymanfa Ganu* ("Festival of Singing") comes

Preview

to Bellevue. Performances by the Llanelli Male Voice Choir, the folk group Plethyn from Wales, and Magical Strings, Seattle's familiar family of Celtic musicians, will be supplemented by four-part audience participation in Welsh and English.

"We don't go overboard, being Welsh," says organizer Alan Upshall, who emigrated in 1984. "We celebrate three or

four times a year when we get together to sing." The Seattle area has a "pretty good" Welsh chorus that sings only in Welsh, a women's choir, a folk band, and a folk dance ensemble.

The festival will take place in Meydenbauer Center. Plethyn and Magical Strings play Friday, September 2, at 9pm; the Llanelli Male Voice Choir performs Saturday, September 3, at 8pm; and *gymanfa ganu*, congregational singing in four-part harmony, takes place on Sunday, September 4, at 2pm and 7pm.

For the first time this year, the festival is holding an *Eisteddfod*, an open competition. In the mother country, such contests include all aspects of Welsh culture, including bardic poetry, but this one is only for solo voice, choral performance, and instrumental performance. The country of Wales is supporting this event rather enthusiastically, contributing adju-



dicators and trophies. The competition will be held all day Saturday, September 3, in the Meydenbauer Center Theater.

The Welsh have always sung, following the musical flow of their liturgical speech, with high clear tenors and sopranos. Unlike the folk traditions of their Celtic neighbors, the Scots and Irish, Welsh folk singing is paralleled by a strong tradition of men's choirs singing opera (from Verdi to Lloyd Webber), classical choral works, music specifically written for them, and lots of church music. The dancing is akin to that of another

bunch of Celts, the Bretons of France, "less vigorous and jumpy than Scots or Irish," says Upshall.

In addition to the singing, there will be a host of seminars on everything from genealogy to Welsh cooking, as well as folk dancing, more informal singing (late into the night), and a marketplace of Welsh goods.

Tickets are \$5-\$15; call 488-7288 for more information. •

PHILIPPA KIRALY is a Seattle freelance writer.

News Nov 93

Puget Sound Welsh Preview Plans for '94 National

By Carrie Fox

Readers who attended the 1993 National Gymanfa Ganu in Wilkes-Barre, PA, got an early preview of the program planned for the 1994 National in Bellevue, WA. The Puget Sound Welsh Association has arranged an exciting Welsh gathering for next year, although some minor details are yet to be settled. The organizing committee has spent this past year putting together an array of tours, seminars, special events and concerts with enough variety to satisfy the tastes of everyone.

The Pacific Northwest is nationally known for its beautiful scenery. Those who live in the region are well-acquainted with this beauty and the tours have been selected to show the Gymanfa visitors some of the best sights. As a special treat for those Gymanfa-goers who arrive early, or who wish to stay for a few days after the events, a full-day trip through the Mt. Rainier National Park is offered.

Visitors will also be given the chance to cruise the Seattle waterfront, view Scenic Seattle and tour Historic Seattle. And, for those who wish to see and taste what is perhaps the best part of Seattle of all, Jeff Smith (The Frugal Gourmet) will lead folks through the Pike Place Market, a produce, craft and seafood extravaganza.

On Friday the 2nd and Saturday the 3rd of September, as well as going on the tours, participants may sign up to explore many aspects of their heritage with seminars in Welsh folk dancing, folk music, poetry, cooking, genealogy and emigration.

They can brush up on their part-singing at the customary

Ysgol Gan, and gain new tips for vacationing in Wales from the Welsh Tourist Board representatives

The Thursday night opening ceremony will be followed by a "Welcome to Puget Sound" concert in which visitors will be introduced to the wealth of talent within the Puget Sound Welsh Association. After refreshments, a Noson Lawen will be held so that others may display their talents.

The Grand Banquet on Friday night will be followed by the folk concert, where everyone can relax and enjoy the group Plethyn, singers of traditional and contemporary Welsh folk music.

As well as continuing with the seminars and tours, Saturday will include the new feature of the first (hopefully of many) National Eisteddfod in North America.

The highpoint of the evening, and of the weekend itself, will be the Grand Concert. We welcome once again to the Northwest the outstanding Cor Meibion Llanelli, directed by D. Eifion Thomas and accompanied by Alan S. Rees. Yes, 1994 will see the return of the male voice choir to the National! They will be supported by Lynn Williams, Soprano and Richard Williams, Tenor from Bowen

Island, B.C. Lynn and Richard are well known singers in both the Pacific Northwest and in Europe.

The Morning Service of Worship on Sunday will be led by the Rev. Enid Morgan from Penarth, South Glamorgan. We are honored to have the Reverend Morgan as the first woman to lead the worship at the National Gymanfa Ganu. As in previous years, the service will be bi-lingual and non-denominational.

As always, the weekend culminates with the Gymanfa Ganu itself. The afternoon session will be conducted by Mary Morris Mergenthal (St. Paul, Minnesota). The organist will be Beverly Ratajak (Corvallis, Oregon). The evening session will be conducted by D. Eifion Thomas (Llanelli, Cymru) and accompanied by Alan S. Rees (Alltwen, Cymru). Tim Dyck of Kirkland, WA will direct anthems in both sessions. Expect to hear most of your favorite hymns and perhaps learn a few new ones!

All in all, the organizing committee has put together a program for a great Gymanfa weekend in 1994. Be sure to look for more details appearing in coming issues, as well as information on registration and travel.

1994 National Gymanfa

Important contacts to keep handy in case you need information or would like to contribute in some way to the 1994 Welsh National Gymanfa Ganu in Bellevue, WA

Chairman:	Alan Upshall	(206) 488-7288
Vice-Chairman:	Bob Matthews	(206) 485-2796
Treasurer:	Steve Ensley	(206) 860-7617
Program:	Wyn Morgan	(206) 483-9423
Eisteddfod:	Mari Wingate	(206) 454-5799

CELEBRITY CHATTER

By Llawenydd Parri-Jones

Timothy Dalton emphatically denies rumors that his role of agent 007 is being recast by producers of the James Bond series. According to Dalton, the last two films in which he starred have grossed \$200 million, and by early next year the script for another film will be

vent news helicopters from intruding on the ceremony as they did at Elizabeth Taylor's wedding. Geena was formerly married to actor Jeff Goldblum.

Ann B. Davis, known for her role of the housekeeper on the "Brady Bunch" TV series, is writing a cookbook. However, it is not quite clear how she intends to do this, since she

lot, the gunmen approached the car and held a gun to Ichinose's head. Michelle surrendered her handbag and both men fled.

Thoroughbred horse trainer Gary Jones is again in first place in the Del Mar trainers standing. His horse won the 8th race on closing day, putting him two ahead of his closest competitor, Mike Mitchell. Jones



National Updates



and CDs that you can carry.

BANQUET

What's on the menu for the banquet? What else, but salmon. No-one can come to the Pacific Northwest without having a salmon dinner, and the first class chef at the Meydenbauer Center has planned one for us.

A first-hand experience of the Meydenbauer Center catering has told me that the quality of the dinner will be of the highest standard. Wine will be available, Washington wines of course.

The whole meal should set you well for the succeeding folk concert featuring Plethyn and Magical Strings. Don't like salmon? The alternative is a vegetarian meal. Come, and look forward to this special evening.

EISTEDDFOD

We told you last month about the trophies for the Eisteddfod competition. We now know that the trophy donated by the URDD, the Welsh Youth Movement will be carved from either wood or slate to the design of their choice. It would be fitting indeed if we could present that trophy to the winner of a Youth vocal competition.

We already have one youth soprano entered, and if another two or three youths (under 18) were to enter we would set up a special youth competition with this trophy as the prize. There is the challenge for the Welsh youth.

Do you have such talent in your society? Sponsor him or her to come and enter. We have had many more enquiries for application forms including some from Wales, all we need now are the entries. Give Mari Wingate a call at 206-454-5799

TRAVEL UPDATE:

In the next issue we'll tell you how the registrations are going, but to hint now already over 100 received and the hotel rooms are going fast.

The following updates arrangements for travel and accommodations.

Headquarters Hotel: Hyatt Regency at \$75 per room for up to 4 in a room.

Overflow Hotel: Bellevue Inn at \$68 per room for up to 4 in a room.

United Airlines: 5% off lowest available fare, 10% off regular fares. Use code 544BW and book direct with United or through a travel agent.

Hertz car rental: Discounts from compact to large cars (standard rental conditions apply) Use code CV 3334. Book direct with Hertz or through the travel agent.

The Shuttle buses provided by the National Gymanfa will run between the Hyatt Hotel, Bellevue Inn Hotel and the Meydenbauer Center only. Other hotels will not be served.

STORIAU O GYMRAU/ STORIES OF WALES

performances, workshops or seminars
custom-tailored to your group's age group and other needs.

The Mabinogi, folklore, Arthurian material

Contact: Beth Phillips Brown
440 S. Jackson St.
Media, PA 19063
610-566-2810



Cor Cymraeg Seattle will be among the performers featured at the Welcome to Puget Sound Concert, opening night of the National Gymanfa Gana in Bellevue. Shown with the choir above is Director Paul Bauck, left, and Accompanist Richard Lind, right.

Special Opening Night Events Planned for Bellevue

By Carrie Fox

In the last eight months, we have informed readers of NINNAU of the various activities that will make up the Welsh National Gymanfa Gana in Bellevue, September 1-4. This month, we'd like to tell you about the special opening night activities planned for the first day.

Thursday, September 1st, is the official start of 1994 Gymanfa Gana Festival. The evening will commence at 7 pm with greetings from Ellis Jones, President of WNGGA, Joel Pritchard, Lieutenant Governor of Washington State, Don Davidson, Mayor of Bellevue, and Alan Upshall, President of PSWA and Chairperson of the Organizing Committee.

The opening ceremony will be followed by the "Welcome to Puget Sound" concert which will feature as much talent from PSWA as can be fitted in.

Our own mixed voice choir, Cor Cymraeg Seattle, will be on the bill. The choir is directed by Paul Bauck and sings only in Welsh, beautifully. It is well established in the Northwest and has performed at many Welsh events in the area. Supporting the choir will be solos from sopranos Carol Enslay and Judith Eide.

Also performing will be Band Y Ddraig Goch, the Seattle Welsh Dragon Band. They will set your feet tapping with a selection of well-known folk tunes. The concert will be interspersed with poetry, instrumental and comedy items from

PSWA's versatile and talented membership.

After a break for light refreshments, the concert will be followed by a Noson Lawen to allow others to contribute their talents. This Noson Lawen will be hosted by local harp enthusiast Bronn Journey, an ever popular entertainer. For this part of the evening to be successful, we need contributors. The program will be loosely organized rather than purely ad hoc. If you want to put your name in the Noson Lawen pot, write to us at the regular mailing address.

After the Noson Lawen, the bar will be open as always and there will be a tuned, unlocked piano available. We expect the singing may start again there and continue well into the night.

Dewi Sant Welsh United Church Toronto, Canada

Has a need for a minister to sustain its ministry and cultural heritage. We are looking for a bilingual minister; many of our services are in English but some are in Welsh.



Our church welcomes not only people of Welsh heritage, but also those attracted by our friendly services and singing.



Housing allowance in lieu of manse; salary negotiable.
Church information package available on request.

Applications with resumes will be received

up to December 31, 1994, by

Mrs. Betty Cullingworth, Chair,

Pastoral Relations Committee

Dewi Sant Welsh United Church,

33 Melrose Ave., Toronto, Ontario, Canada, M5M 1Y6

By Alan Upshall



The Black Diamond Historical Museum housed in the old Black Diamond train depot is one of the stops on a tour planned for the coal mining area of Washington state which was settled by the Welsh in the 1880's. Photo © Cynthia St. Clair Taylor.

Our plans for the eisteddfod to be held in Bellevue at the National Gymnast Gŵyl Festival in September may seem strange to purists, so perhaps some clarification and expansion would be appropriate, especially with respect to the Welsh language.

First, the competition will be run in North America primarily for North Americans (although we hope that some of our Welsh guests will compete). Second, most North American Welsh cannot speak the language and have difficulty with pronunciation. It would, we felt, be unfair and limiting to ask for everything in Welsh.

This difficulty has ramifications for literature competitions and here we had an additional problem. Mary Mergenthal runs the Eisteddfod-by-Mail competition, and it was unfair to compete against that worthy cause. We decided therefore to collaborate and let Mary run the literature competition and we the

vocal. The Eisteddfod-by-Mail prizes will be presented at the Bellevue Eisteddfod in September.

Third, we had no way to predict the level of response. We could have set up many different individual competition categories with set pieces of music and had only one entry in each, if we were lucky. Not a good beginning! Instead, we discussed the structure of the competitions with the chief adjudicator, D. Eifion Thomas, and agreed that at this stage a rigid format would probably be a deterrent to entry. So, despite the difficulties for the adjudicator (comparing a mixed versus a male choir is not easy). We left the competition open. The restriction is that vocalists must sing at least one piece in Welsh, and that does not stop them from singing two.

Where does that leave the instrumentalists? In terms of Welsh pronunciation, out in the cold, but at least we were giving the opportunity for those musicians who do not vocalise to compete in a Welsh setting.

Yes, there are many aspects of an Eisteddfod that are missing. Notable absences are competitions in literature and poetry. However, in this first attempt, time becomes a limiting factor. Look at the program and ask where we could fit it in. We hope that a successful first eisteddfod will encourage future National Gymnast Gŵyl organizing committees to expand the competition and add their own flavor.

One factor we must not forget. The future of our heritage lies in the hands of the young people. They have to be encouraged and interested. The folk concert, now a feature of the festival does a great deal to encourage that. Young people are by nature competitive. It is our hope that the eisteddfod will attract youth and illustrate to them the significance of their Welsh heritage and to display to the non-Welsh, the contribution the Welsh immigrants have made to the development of both the U.S. and Canada.

The importance of our Eisteddfod is not lost in Wales. Trophies for our competitions have been donated by the Urd (the Welsh youth movement), the Welsh National Eisteddfod, and the Wales Tourist Board. We have been overwhelmed by the response and support that we have had from our contacts and connections in Wales. What is now needed is the response from we Americans and Canadians to make the eisteddfod a success. Take a leaf from the Whitney Women's Choral of Boise, Idaho. They have entered and are learning to sing in Welsh especially for the occasion. John Owen, a Welsh speaking Idahoan is coaching the choir in the language. A fine example for us all.

Send for your Eisteddfod information to Mari Wingate, 1339 Bellefield Park Lane, Bellevue, WA 98004. Tel: 206-454-5799.

Black Diamond: The history of the Welsh immigrants in the Northwest is as rich and vibrant as that in other areas of the country. The Welsh came here for the same reasons as they settled anywhere: coal mining and farming.

We will visit Black Diamond, the coal mining area settled by the Welsh in the 1880's. It will include a tour of the Black Diamond Museum and a visit to the renowned bakery and shops. There will also be time to walk through the cemetery and see the Welsh names and inscriptions on the gravestones.

The Frugal Gourmet's Market & Kitchen: Jeffrey Smith, The Frugal Gourmet, will take a group of 25 lucky people on a personal tour of the Pike Place Market. They will then be invited to his test kitchen for Columbia Crest wine and hors d'oeuvres prepared by Chef Craig Wollam. Jeff, Craig, and Columbia Crest Winey have all donated their services and product to the National Weekend.

All tours (other than the day-trip) are four hours in length and include deluxe motorcoach transportation from the Bellevue Hyatt, the headquarters hotel, and return. A professional tour guide will lead each tour and any entry fees are included in the price of the tour.

We think these tours will provide our visitors with an appreciation of the Northwest and pleasant memories to share on their return home!

If any tour is undersubscribed, we reserve the right to cancel it. The Mt. Rainier and Northwest Trek trip may be offered on only one day if too few people enroll.

Group Airfare Available from East Coast

Swanton Travel has negotiated great airfares at group rates for travellers from the East Coast to Bellevue, Washington for the 1994 National Gymnast Gŵyl in September. The group departure will be from Philadelphia, departing September 1st and returning on the 4th. The roundtrip airfare is being offered at an extraordinary rate of \$390.00 (plus taxes) per person! However, in order to receive this rate, your reservation must be confirmed by deposit of \$40.00 to be received

no later than April 15th. Swanton Travel is also offering an alternative hotel site. For those willing to stay in triple or quad accommodations, Swanton can provide the following per person/night rates: \$99/single; \$50/double; \$38/triple; \$30/quad. These rates include use of a kitchen, so you can save on meals also.

For additional information or to make your reservations, contact Swanton Travel at 802-868-5406.

Fascinating Seminars Planned for Bellevue

By Carrie Fox

As always, the National Gymnast Gŵyl Weekend will encompass a variety of interesting and fun seminars and tours.

SEMINARS

This year we will offer familiar topics as well as some new ones. Most seminars will be given twice and run approximately one hour. There will be a 30-minute break between seminars to allow for visiting or a quick stop in the Tea Room or Marketplace.

This year's update on current affairs in "Wales Today" will be presented by Patrick Hannan. Mr. Hannan is a popular BBC broadcaster and news commentator. He will discuss various aspects of modern Welsh society.

After Mr. Hannan has inspired participants to start planning their next trip to Wales, they may then attend the seminar on "Vacations in Wales." Representatives from the Welsh Tourist Board will present sights and descriptions of Wales and share valuable travel hints.

Dr. Gerald Morgan of Aberystwyth is a former headmaster and University lecturer on Celtic Heritage. He will give an informative and entertaining seminar on the origins of "Welsh Place Names." His talk will include stories about these place names.

Audrey Collins will be returning to the Weekend with her popular cooking seminar. This year's "Welsh Cooking" will feature how rationing during World War II affected the cuisine of the Welsh people.

"Tracing Your Family History" will be offered in two sessions this year: one for newcomers to genealogy and one for those participants who have already begun their family search. The beginner's seminar will focus on getting started on the right foot and zeroing in on special areas of Wales.

The more advanced group will learn in greater depth how to find genealogical information, both in North America and in Wales. The presenter, Ed Porter, will also discuss various

methods of presenting family genealogy on paper.

Participants are invited to bring their family trees with them for display. Mr. Porter is the author of "The Olivers of Cardiganshire" (June 1993) and has done extensive genealogical research over the past 40 years.

Since this year marks the revival of nationwide Eisteddfod competition in this country, it is fitting to remember past American Eisteddfodau. Martha and Phillips Davies will tell us of "The Eisteddfod in North America," with particular emphasis being given to such celebrations as those at the World Fairs of 1893 in Chicago, 1909 in Seattle and 1915 in San Francisco.

The Vancouver Welsh Folk Dancers will lead lively workshops on *Welsh Folk Dancing*. The beginner's session will cover basic steps and some simple dances. The advanced workshop will include *Adelyn Newydd*, *Ffarwel Martiane*, *Jig Yr Ffermyr* and other complex dances. Dancing is a good balance to the more sedentary sessions and a great way to get the spirit and blood moving.

The Vancouver Dancers will also join the folk singing group, Plethyn, in presenting a *morning of fun and music* to the young people attending the Weekend. This three hour event will be a fine introduction to the rich tradition that is the heritage of all Welsh people.

As in other years, there will be *Part Singing* seminars to prepare for the Gymnast. Participants can work on their Welsh pronunciation and brush up on their harmony parts. Mary Morris Mergenthal will lead the Soprano and Alto session and Tim Dyck will lead the Tenor and Basses.

TOURS

The Pacific Northwest may be new territory to many of those attending the '94 National. The tours have therefore been arranged to allow visitors to enjoy more fully the natural beauty that surrounds Bellevue and Seattle.

Mt. Rainier National Park & Northwest Trek: On Thursday, Sept. 1, and Monday, Sept. 5,

there will be an all-day trip to Mt. Rainier National Park. Mt. Rainier is one of the most spectacular sights of the Pacific Northwest. This 14,411-ft. mountain, a dormant volcano, is capped with glaciers and can be seen for hundreds of miles on a clear day.

At the park, one can easily see the mountain's peak, as well as alpine meadows, waterfalls, lakes, canyons, and the White River. Mt. St. Helens, the volcano that erupted in 1980, is visible to the south and a third mountain, Mt. Baker, is visible to the north.

The tour continues with a visit to Northwest Trek, a free-range park that is home to a variety of native animals, including bison, moose, caribou, deer, cougar, bobcat and lynx. A 45-minute tram ride through 435 acres allows visitors a chance to spot some of these animals.

Harbor & Waterfront Tour: This tour has been designed to show off some of the close-at-hand beauty. From the waters of Puget Sound on Elliott Bay, visitors will cruise amid the bustle of tugboats, ferries, and international shipping vessels. They will have a spectacular view of Seattle's skyline and the mountains as well as a first-hand look at one of the world's largest shipping ports.

When the harbor tour is over, participants will have time to browse through the waterfront shops, where a variety of goods from all over the world is available. Seafood and local wares can be purchased as well.

Discover Scenic Seattle: For a look at some of the human-designed sights of Seattle, try this tour. Visitors will see the downtown area, the Seattle Center (site of the 1962 World's Fair and the Space Needle), the University of Washington, the Arboretum, the Hiram Chittenden Locks with fish ladders, the waterfront, Pioneer Square, and the Pike Place Market. There will be a walking tour of the Japanese Garden at the Arboretum.

Museum of Flight: Airplane buffs will be fascinated with this museum featuring the story of flight from its beginnings to the present. The museum is located at Boeing Field near the site of the first building of The Boeing Company. Approximately 45 aircraft, spacecraft and other large artifacts are displayed.

MAPS & BOOKS ON WALES for gifts and research. For full details send \$2 and details of your area of interest to: David Wynne Edwards, Yr Orsaf, Pensarn, Abergale, Clwyd, LL22 7PR

Eisteddfod Planned for 1994 National Gymanfa

By Alan Upshall

The organizing committee of the 1994 National Gymanfa Ganu in Bellevue, WA have planned to add to the festivities an Eisteddfod. Eisteddfodau are traditional Welsh competitions in all aspects of culture.

Since this is the first time this has been tried at the annual Gymanfa weekend, it was decided to keep the competition as simple as possible. The original idea was to have three basic open, no age restraint, competitions in solo voice, choral and instrumental, with the winner in each category receiving a cash prize.

The winner of the choral competition may be invited to perform in the Sunday morning church service.

However, the response from attendees at the Wilkes Barre National Gymanfa Ganu to the idea was beyond our expectations. If the response translates into entries we will have fantastic competitions.

Our original plans were formulated in a vacuum. We did not know what the response would be but we were prepared to try because we believe that

the eisteddfod is an essential part of Welsh Culture and is an ideal medium to encourage our youth to become involved in their heritage.

It seems as if our original ideas were too simple and we are prepared to alter our plans dependent on the number and type of entries. For example, if there are several entries from youth vocalists we will make a separate competition for that group.

Similarly for a specific instrument type e.g. if we get several harp entries. We will however, only generate a separate group if there are three compatible entries.

Yes, this will make the eisteddfod larger and we may have to hold preliminary rounds, but won't that be exciting! The more the merrier, we will just have to organize it.

Clearly, we cannot set up the different categories of competition now because it would be too restrictive. We will let contestants know well in advance if we need to set up specific groups. Don't forget to put your phone number on the entry form.

Continued on page 10.



...n, Mrs. Hazel Walford
...ant Davies and Hywel

avies ed

...ompleting a televi-
...on the Ar...



Quilt squares for the Poultney, VT quilt project are displayed in the Welsh Market Place.

Eisteddfod Planned

Continued from page 1.

Competition Details

Vocal: Entry fee \$20, Prize awarded \$50. Adjudicator D. Eifion Thomas, Director of the Lanelli male Voice Choir. Two contrasting pieces to be sung, at least one of which must be in Welsh. Eight minutes is the allotted time. An accompanist will be available but competitors are encouraged to bring their own.

Instrumental: Entry fee \$20, prize \$50. Adjudicator not yet appointed. Two contrasting pieces. Tunes with a Welsh flavor are encouraged. Ten minutes allotted time.

Choral: Entry Fee \$50.

one of which must be in Welsh. Time allotted 12 minutes.

Entry fee must be sent in with the entry form. Two copies of the music must be provided. This may be sent separately from the entry form, but the music must be received by July 31, 1994.

The success of the eisteddfod will depend on the number of entries. At Wilkes Barre the interest was strong, so select your music and begin to rehearse. Come and be a part of this new tradition for the Gymanfa Ganu festival.

We look forward to seeing the talents of the Welsh communities in Bellevue next year. Further information and entry

Ganu is not merely a pleasant week-end while harmonizing on Blodwen and Cwm Rhonda...the National is essential to the being of the Welsh soul. We have the opportunity to reacquaint and re-establish in our person the present and to develop and promote our Welsh culture, religion and heritage. Hearts, minds and souls can re-focus. It's a time of celebration of Welsh ancestral roots and the legacy left to us.

Just two weeks earlier when called to preach the sermon at the National, he didn't know what message he had, but after 42 years of being a minister he was reminded that the Lord always directed on Sunday morning.

Hebrews 11 & 12 record names throughout the history of the Old Testament...Noah, Abraham and Moses...all lived by faith. For us, it's a wonderful comparison to people we remember today - our ancestors who lived by faith. It's imperative we look back to have an intelligent and emotional understanding of who we are. The past is a safe place to hide; we can go there; only we know we can't stay there.

Nanaa Sept. 93

Mrs. C
Sa
Mr. R
Cle
Ms. P
Be
Mr. C
On
Mrs. C
Nil
Mrs. I
To
Mrs. I
Yo
Mr. D
Th
Mr. H
Ma
Mrs. A
St.
Mrs. J
Sun
Ms. M
Yps
Rev. I
Ma
Mrs. C
Kit
Dr. D
Ba
Mrs. J
Br
M. M
Van

National Gymanfa to Feature Welsh Folk Concert

by Alan Upshall

Each month we have been introducing you to the northwest and its Welsh community as it prepares for the national in 1994. This month we will begin to describe the events themselves. We shall start with Friday night's post-anquet entertainment, the Folk Concert, in which we will hear two outstanding groups: one from Wales, Plethyn, and one from the Pacific Northwest, Magical Strings.

Plethyn is one of the most popular of Welsh folk groups. They have appeared frequently on British television, including their own Welsh program, and on radio. Their many recordings are extremely popular both in Wales and North America. They have previously toured in the

US and Canada, as well as most of the Celtic countries. Their harmonies have been transfixing audiences since they were founded in 1974.

The three original members are Linda Healy, Roy Griffiths, and Jac Gittins and the fourth member, Beryl Watkins, added her talents to the group in 1991. The four performers are originally from the Llanfair, Caereinion and Llanfyllin areas of Montgomeryshire; Linda and Roy sister and brother, Jac is a neighbor and Beryl a colleague. All work in some aspect of education in Wales.

Plethyn performs traditional and modern Welsh folk, singing in close harmony. They accompany themselves with Linda on guitar and concertina, Roy on mandolin, banjo and guitar, and Jac on mandolin, whistle and

guitar. As well as being the centerpiece of the Folk Concert, Plethyn will also present a seminar on Welsh folk music and be part of the youth activities.

All members of the group are delighted to be returning to the U.S. and are looking forward to their first National Gymanfa performance and to visiting the Pacific Northwest for the first time.

Seattle's own Magical Strings are the instrumental duo, husband and wife Philip and Pam Boulding. They play Celtic music and their own compositions on Celtic harp, hammered dulcimer, harmonium and pennywhistle. Over the past twelve years, Magical Strings have toured extensively throughout Canada, the U.S. and the British Isles. They have released six albums and appeared on many television and radio networks around the country and overseas.



Plethyn is Roy Griffiths, Jac Gittins, and Linda Healy, (above) along with Beryl Watkins (not shown).

Philip and Pam lead a very busy life. They give annual Celtic Yuletide Concerts throughout the Pacific Northwest, performing to full houses of up to 1500. They also run the well-known School of Magical Strings, offering classes in Celtic harp and hammered dulcimer in the greater Seattle area.

as well as designing and manufacturing string instruments for a national clientele.

We are delighted to have them perform with Plethyn at the Folk Concert at the 1994 National Gymanfa Ganu in Bellevue, Washington.



Ring Out Wild Bells

By Lyn Gardiner

As a child, I used to love to listen to the bells ringing out over the valley. Every Sunday morning, the lone bell in St. Mary's would call the faithful to worship. The little church was always in need of repair, but the congregation was not rich in worldly goods. The collection plate was usually empty except for a few pennies. Rev. Leach would bless the offering, no matter how sparse it was.

Rev. Leach had been gassed in WWI, and he would wipe his eyes with a snowy white linen cloth. Mustard gas was a deadly weapon that left one with a legacy of tears, if it hadn't killed you. Many men who fought in WWI were afflicted by its aftermath.

Old Mrs. Thomas sat in the front row wearing her old black hat. The old lady couldn't sing good, she sang wood. I suspect she was hard of hearing!!

The old verger, who was my godfather, would be the last to take communion. He would walk up the aisle, putting the ends of his straggly mustache in his mouth to lick off the remnants of wine that adhered to them.

The men and boys in the choir would file into their places and at harvest time they would sing "Bringing in the Sheaves," as they came in. At Christmas time, it would be a carol. Brother Brenig was the soloist. His high treble soprano voice would be heard above the rest. His rendition of the solo at Easter time would cause "goose bumps" to rise along my arms. The choir master was Hughes the Mill and Brother Tom would wink at me as we watched a fly crawling atop the old man's pink-skinned, bald head.

Each family had its own special pew, and, one by one, the members would file into place, amid much shuffling and clearing of throats. Nantgarw had a lot of men with chest complaints from the dust of the coal mine.

I never think of home without hearing those rasping sounds and harsh breathing, of throats being scrapped to clear away the mucous that clogged the airways. How the men managed to sing so beautifully was a mystery, but sing they did.

On new year's eve, the bell would ring out at midnight. The place would be filled with people for the Watch night service. "Ring out wild bells to the wild sky, the year is dying, let it die!" As we filed out of the church into the crisp, frosty, moonlit night, we would hug and kiss our neighbors and wish them a happy new year.

In WWII, the bell was silent, but in 1945, it rang out once more, bringing its message of peace on earth, to men of goodwill. It was a joy to hear.

1945 was my last Christmas in my lovely homeland. It's been many years since I heard the bell ringing in the new year, but I can never forget those golden days of childhood. Brenig's voice has been stilled since 1943, along with old Hughes and Tom, and Mrs. Thomas is no doubt still wearing her old hat and singing in a heavenly choir.

What will the year 1994 bring? Only God knows, but it will surely be better than the one just past!

I will close with best wishes for a year filled with joy, laughter and song, and say "mizpah" to you all. "Mizpah" was my mother's favorite blessing, and it means "The Lord watch between me and thee while we are absent one from the other."

God bless, until we meet again.

All Roads Lead to Bellevue

By Alan Upshall

The 1994 National Gymanfa Ganu will be held in Bellevue, Washington. Where's that you ask?

Bellevue is 15 minutes from Seattle, a scenic drive over one of the two floating bridges spanning Lake Washington. But you don't have to go into Seattle to get there; freeways run from Bellevue directly North, South and East (Seattle and Puget Sound are West). There is a direct freeway link with Seattle Tacoma International Airport.

We chose Bellevue instead of Seattle primarily because it is less expensive; hotel rates are \$20 per night less. The city is small, spacious and clean. It also has one of the best shopping centers in all of North America, Bellevue Square.

We will be presenting more information on the location later in this series, but we wanted now to encourage you to expand your visit to the Gymanfa by a few days to come and soak up the superb scenery of the Pacific Northwest. We have worked with the hotel, United Airlines and Hertz Car Rental to make your visit an economical one.

The rate for the headquarters hotel, the Hyatt Regency, will be \$75 per night (excluding tax) for any room. Suites will cost more. That is a fantastic rate for a high quality hotel in the Seattle/Bellevue region. We have also arranged for overflow accommodation at the Bellevue Inn for \$68 per night (excluding tax). These rates are available for three days before and three days after the Gymanfa, that is, for 10 days in total. Both hotels are well within walking distance of the Meydenbauer Center where the Gymanfa's major events will be held.

We have chosen United Airlines as the official carrier for the National Gymanfa Ganu weekend. United is very pleased to offer a 10% discount off the unrestricted BUA coach fare or a 5% discount off the lowest applicable fares, including first class. This special offer is available only to attendees and applies to travel on domestic segments of all United Airlines and United Express flights. The same discounts are also available for attendees traveling to or from Canada in conjunction with the Gymanfa. You can book these special fares with any travel agent or direct with the United Specialized Meeting Reservation Center at 1-800-521-4041. To obtain these fares, you must quote our meet-

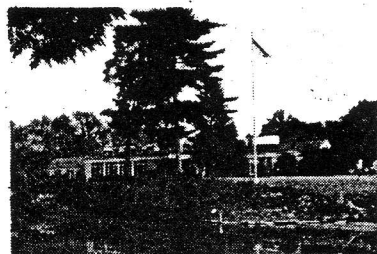
ing ID number 544BW. Mileage plus members will receive full mileage credit for all miles flown to the meeting. United Airlines was chosen since it has the most extensive route system into Seattle-Tacoma International Airport. With over 9,400 seats per day, there should be a schedule to suit everyone.

To complete the package, we have negotiated special meeting rates with Hertz for car rental. The rates are guaranteed for one week before and one week after the meeting dates of September 1 through 4. Cars are subject to availability and include unlimited mileage. The special rates are available on all classes of car from compact to large size. As an example, a weekly rental for a 4-door, midsize car is only

\$122.99. As with the air ticket, you can book the car with any travel agent or direct with Hertz at 1-800-654-2240, but you must use the special ID code of CV 3334. As with all rentals, the standard conditions and qualifications apply, including minimum rental age.

So you see, there is every reason for you to come to Bellevue next September and spend part of your annual vacation in the Pacific Northwest, where lakes meet the mountains and where it rarely rains, especially on the Welsh! Take this information with you to your travel agent who will do the rest, or just call the direct numbers and book your tickets over the phone with United and Hertz. To obtain more information, call 206-488-7288.

The Women's Welsh Clubs of America



Federated to Support
THE WELSH HOME FOR AGED
Rocky River, Ohio

❖
Second Floor Open
for Assisted Living
❖

For information, please write to:

Administrator
THE WELSH HOME
22199 Center Ridge Road
Rocky River, Ohio 44116

(216) 331-0420

Puget Sound Welsh Association Hosts for 1994 National Gymnanfa Ganu

At the recently held 62nd National Gymnanfa Ganu in Wilkes-Barre, the Puget Sound Welsh Association (PSWA) officially became the flag bearers for the 63rd annual gathering of the North American Welsh, to be held in Bellevue, Washington. Here's a thumbnail sketch of this lively society.

PSWA was formed in 1984 to combine the Welsh groups of the area into a unified force. The Seattle Welsh Women's Club was one of the cornerstones of the Seattle Welsh Presbyterian Church (1889-1956). Dosbarth Cymraeg was formed in 1980. Welsh pronunciation was learned by singing and led to the rounding of Cor Cymraeg Seattle.

These three groups coordinated their activities under one banner, a Red Dragon Flag, shaped as Washington State.

In 1986 and 1989, Band Y Ddraig Goch and the Folk dance groups formed respectively. The board of PSWA has members from each of the constituent groups and Members at

Large, people not belonging to an active club.

PSWA successfully promotes and sponsors Welsh activities within the Puget Sound region. Subscribers to the monthly newsletter Y Ddolan (The Link) now number approximately 175. An annual Gymnanfa is organized by Cor Cymraeg Seattle and is regularly attended by over 250 people.

St. David's Day is celebrated with a concert jointly organized with a concert jointly organized with PSWA and the Seattle Welsh Women's Club. Cor Cymraeg Seattle presents an annual Xmas Concert. Bron Journey, the society harpist, holds his Christmas Concert over two nights to satisfy the demand for tickets.

Tim Dyck regularly directs the annual Bryn Ston Gymnanfa in Beaver Creek, OR, has directed in Vancouver and Victoria, BC and has also directed the spring gymnanfa in Delta, PA. Pot lucks and noisier lawn gatherings happen frequently.

Over the years, PSWA has

Gymnanfa Festival

Continued from page 9

could not have asked for better. The assembled singers had responded well to his every direction.

Alun was pleased to have Gwynndaf Roberts as organist. He had worked with the Ulrica musician before, and they had performed well together. Together in Wilkes-Barre, both proved themselves master musicians. It was good for all to have them at the helm.

ANNUAL WNGGA GENERAL MEETING

The deliberations at the annual general meeting proved that our organization is prospering. The future looks good, and with the interest of so many young people the WNGGA can look forward to continuing successes.

hosted several Welsh male voice choirs. The last two choirs were from Llanelli and Downais, both from South Wales. Triple harpist Robin Huw Bowen, and a folk group Mabstant have been repeat visitors.

This September, the society hosted a reception for a Welsh trade delegation headed by Sir Wyn Roberts, Minister for Wales in the British Parliament.

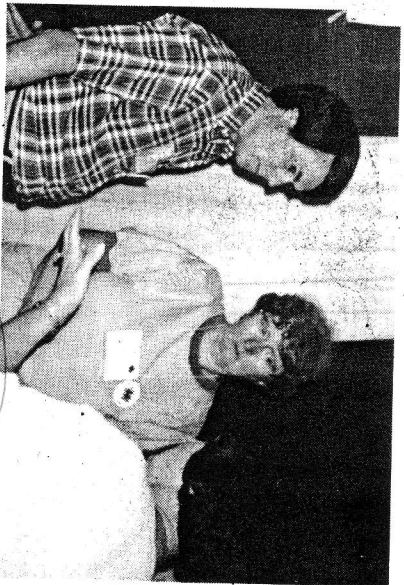
In 1991, PSWA cosponsored the first Northwest Welsh Weekend in conjunction with the Pacific Northwest Gymnanfa Ganu Association. The successful venture inaugurated the annual regional Welsh weekend which was held in Peniticon, BC in 1992 and in 1993 in Corvallis, OR.

The society and its clubs contribute to ethnic fairs and Celtic festivals. Band Y Ddraig Goch and Cor Cymraeg Seattle frequently perform at the Seattle Folk life festival and last summer the band played at the Duncan folk festival in Duncan, BC.

In 1992 the society successfully bid to hold the National Gymnanfa Ganu, and have put together a strong Welsh package. The organizing committee for the 1994 National Gymnanfa Ganu is headed by PSWA president Alan Uppshall, a native of the Rhondda.

Other members are: Bob Matthews (vice chairman and Sunday activities), Steve Ennsley (treasurer and registration), Tim Dyck (entertainment), Wyn Morgan (brochure), Liz Heath (seminars and tours), David and Mary Powell (hospitality) and Brian Parry (logistics). The secretary is Greta Uppshall.

Over this next year each issue of this paper will present aspects of the program with profiles of artists, news, and registration details. Keep reading and begin to plan your holiday to Seattle around the National Gymnanfa Ganu festivities over labor day 1994.



Steve Ennsley, Greta Uppshall and Mari Wingate of the Puget Sound Welsh Association were busy encouraging visitors to Wilkes-Barre to come to the 63rd Annual Welsh National Gymnanfa Ganu to be held in Bellevue, Washington, labor day weekend, 1994.

A SPECIAL THANK YOU

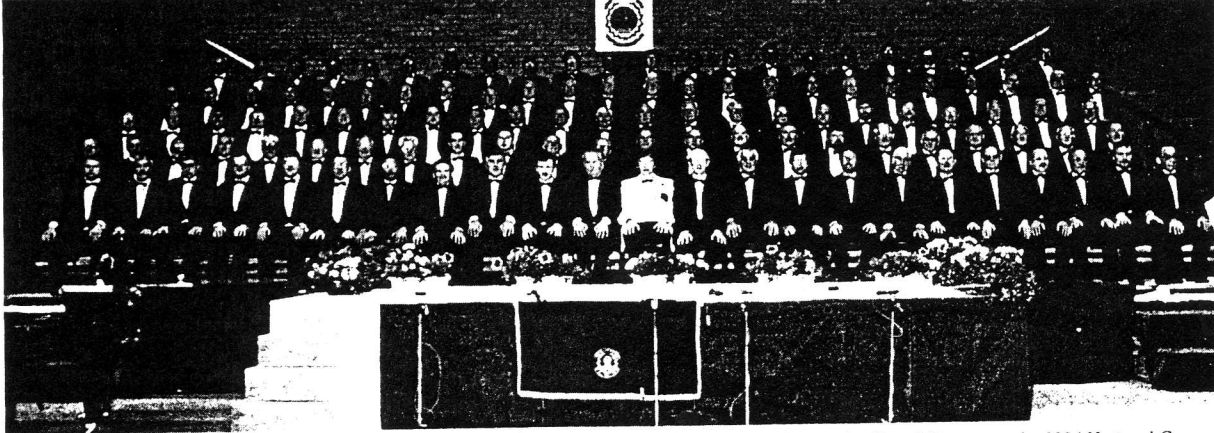
To all of the hardworking people who made the 62nd Annual Welsh National Gymnanfa Ganu such a resounding success, with special thanks to the 1993 Northeastern PA Gymnanfa Ganu Committee officers and members.

Diolch yn fawr iawn.

From NINNANU and all who attended the Wilkes-Barre Gymnanfa Ganu.



Jack A. Pritchard, Chairman, and Beth D. Lamhesset, Vice Chairperson, of the 1993 Northeastern PA Gymnanfa Ganu Committee. Photo by Bernie Walko.



Cor Meibion Llanelli, the Llanelli Male Choir, will be making its third trip to North America to appear at the Grand Concert at the 1994 National Gymanfa Banu in Bellevue, Washington this September. The award-winning choir has traveled throughout Europe and Australia.

Male Voice Choir Returns to National Gymanfa

Male Voice Choir Returns to the National Weekend
By Carrie Fox

After a lapse of two years, 1994 will see the return of a male voice choir as the centerpiece of the entertainment at the National Gymanfa Ganu festival to be held in Bellevue September 1 to 4. Not only that, but the organizing committee has arranged for one of the very best choirs in Wales to provide a concert that will surely tug at all the heart strings and emotion of the occasion. The choir is

Cor Meibion Llanelli, the Llanelli Male Voice Choir, under the direction of D. Eifion Thomas, with Alan S. Rees accompanying. This choir has a spectacular pedigree.

In 1994, the choir will be 30 years old and in that time it has had abundant success. They have won the Welsh Royal National Eisteddfod choral competition twice, they have a record seven victories in the Porthcawl, S. Wales Miner's Eisteddfod and they have won or placed in many other competitions too numerous to mention.

They have undertaken several tours of Europe, especially Germany. The choir is in constant demand for performances all over Britain, with 1993 concerts in Kidderminster, Worthing and Brecon Cathedral as well as in their home town. Last year they were invited to be the featured choir at Cardiff Arms Park for both the Welsh Rugby Cup final and for the rugby international between Australia and Wales.

The highlight of their 1993 season was an outstandingly successful tour of Australia, singing to capacity audiences in Melbourne, Sydney, Adelaide, Brisbane and Cairns. The Australian press showered glowing praise for the performances.

The choir has also appeared in many television and radio programs and has complemented these with recordings of fine collections of beloved Welsh and English tunes. The most recent CD, *Timeless Moments* has outsold all of its major choral CD competitors and the previous album *Pan Ddaw'r Nos* has achieved Gold Disc status for worldwide sales.

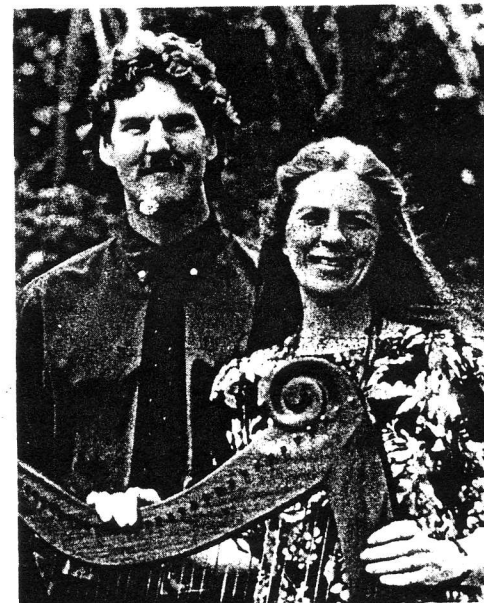
This will be the third time the Llanelli Choir visits North America. The first time was in 1980 and the second, to sing at the National Gymanfa Ganu in Victoria, BC, Canada. On their most recent visit, the choir also gave concerts in Vancouver, Olympia and Seattle, WA.

Because of the success of the concerts and the incredibly friendly social interactions which occurred during that tour, members of The Puget Sound Welsh Association virtually threatened the National Gymanfa Ganu organizing committee with extinction if the Llanelli choir were not invited for 1994. Needless to say, the committee value their lives, but

the Llanelli choir was their choice anyway!

The Grand Concert will be superb with a fine Welsh pro-

gram. The choir will be supported by soloists to complement the whole occasion. More about these in a later issue.



Philip and Pam Boulding, the husband and wife team Magical Strings, will appear at the National Gymanfa Folk Concert. See the January issue of NINNAU.

Ready, Set, Register!

By Alan Upshall

The registration package is nearly ready! The goal of the organizing committee for the Bellevue WA National Gymanfa Ganu is to have the registration and information package ready for distribution to members of the National Gymanfa Ganu Association by mid February. This package will include information on the program and events, a registration form, and more information on travel and hotel accommodation, including details for booking.

Members of the National Gymanfa Ganu Association should be receiving this package towards the end of February. If you are not a member of the Association (same on you) then you will either have to wait until the March issue of NINNAU when the program will be detailed or write to NGG Committee requesting the registration package.

If you want to be in line for some of the best rooms and seats, then you should write for the information soon. There is another reason for writing soon. One of our seminars will be extra special, but because of its nature, will be restricted to a

limited number of people. There will be more detailed information on the seminar and tour program in the next issue, but this special seminar warrants a sneak preview now.

If you watch television, then you know of the Frugal Gourmet. Geoffrey Smith who lives in Seattle has agreed that, if he has time, (which so far seems so) he will entertain 25 people to a special lunch. The cost of this tour will be \$50 and the attendees will be determined by the order of opening of the registration envelopes. So in order to be able to be in the running for this special tour you will have to be among the first to send in the registration forms.

We suggest therefore that any National Gymanfa Ganu non-member write to us requesting a registration package.

The address is Steven Ensley, Puget Sound Welsh Association, P.O. Box 19344, Seattle, WA 98109. Please include a self-addressed, stamped envelope (29 cent), size 9.5 x 4.5 inches.

See page 4:
"The Welsh Churches
of Washington State"

CONTINUE THE TRADITION

Remind your children and grandchildren of their Welsh heritage, send NINNAU Gift Subscriptions for St. David's Day!

One year gift subscription
\$10.00 US or \$13.00 Canadian

NINNAU PUBLICATIONS
11 Post Terrace
Basking Ridge, NJ 07920

Cyngor

Quarterly journal
dedicated to
Welsh autonomy

Receive the
official voice of
Wales 21

Send \$5 (US) to:
Wales 21, 15524 81st
Ave. N.E.,
Bothell, WA 98011

AT LAST, THE LONG AWAITED

Songs of the Dragon Caneuon y Ddraig

A Collection of Welsh Folk Songs

This Collection of Over 70 Welsh Songs consists of Folk Songs, Sea Shanties, Lullabies, Children's Songs, Carols and a Penillion arrangement
Includes words, music and background notes

Only \$10.00 each

(including postage and handling)
Discount available for quantity purchases

Send complete name and address along with \$10.00 per copy, to:
Nelson L. Llewellyn, Secretary
Welsh National Gymanfa Ganu Association
662 Melwood Drive, N.E.
Warren, OH 44483

(216) 372-5885 or (216) 652-1292

National Updates



GRAND CONCERT

We recently received the program for the Grand Concert to be given by The Llanelli Male Voice Choir. The concert is entitled "The Loud Hill of Wales: A Program of music, poetry and prose in celebration of Wales and matters Welsh," and was compiled by choir director D. Eifion Thomas.

The narrator for the evening will be Desmond Jones and the soloist, Teifryn Rees. Both narrator and soloist are members of the Llanelli Choir. In this program the choir will sing 21 songs, interspersed with poetry and prose selected to illustrate the many different facets of Welsh life and history.

When you come to Bellevue please bring many handkerchiefs and tissues. I promise that you should leave this concert with hearts well uplifted and with tears in your eyes.

EISTEDDFOD

It looks as if we may have our first breakout competition. We have three sopranos entered in the vocal competition. One more and, as we have promised, we will set up a separate competition for them.

We also have our first instrumentalist entry, a flautist.

The frequency of requests for information has increased over the last few weeks, so we are increasingly optimistic that we shall have thriving competitions. We

are beginning to plan for the possibility that we shall have to extend the competition back into the Saturday morning to accommodate the entries. Deadline for entries is July 31, 1994, with music, two copies.

We have appointed our second vocal adjudicator, Mari Morgan, of Llanelli, Wales. Mari is no stranger to those who attended last year's Gymnast Ganu at Wilkes Barre; she sang at the Noson Lawen. Mari is an accomplished soprano who spends a great deal of time in Chicago with her music tutor. She has adjudicated many times at Eisteddfodau in Wales.

It turns out that Mari knows our other adjudicator D. Eifion Thomas. Indeed, Mari's father and Eifion live only 200 yards from each other. It's such a small world.

REGISTRATION

Over 300 people have now registered for the weekend by returning their registration forms. On top of this, a comparison of the hotel registrations and event registrations leads us to believe that over 500 people have already committed to coming, and there are some well known names not yet on either list!

In looking at the hotel list we see that several people have reserved multiple rooms. The hotel has asked me to pass on the word that those rooms should be registered in the occupant's names as soon as possible. There has been a strong demand for rooms at the Hyatt Headquarters hotel and we would hate to turn people away only to find rooms cancelled out closer to the date.

There are plenty of single bed rooms left in the Hyatt, double bed rooms are at a premium. The Bellevue Inn still has plenty of room.

Time to Start Practicing Gymnast Hymn List Assembled

By Alan Upshall

The only details of the Upcoming National Gymnast Ganu Festival which have not been described in Ninnau are those relating to the Gymnast Ganu itself. Our Gymnast directors, Mary Morris Mergenthal and D. Eifion Thomas have been communicating at long distance to assemble a balanced hymn list. They have completed that task and here are the hymns we will be enjoying.

AFTERNOON SESSION

Directed by Mary Morris Mergenthal, MN, accompanied by Beverly Ratajak, Corvallis, OR.

Set 1
Huddersfield (19)
Bryn Myrddin (23)
Ebenezzer (11)
Pen Y Bryn (46)
Builth (73)

Set 2
Blodwen (60)
Llef (56)
Y Delyn Aur (41)
Sanctus (30)

Set 3
Tydi A Roddaist (109)*
Pennant (80)
Rheidol (81)
Blaenwern (75)

Set 4
Buddgoliath (100)
Brwnog (25)
Bryn Cafarn (3)
Cwm Rhondda (40)

The special music for the afternoon session will be sung by Annette DePuydt of Salt Lake City and Carol Ensley of Seattle. The anthem for the session *Tydi A Roddaist* will be directed by Tim Dyck of Kirkland, WA.

EVENING SESSION

Directed by D. Eifion Thomas, Llanelli, Wales, accompanied by Alan S. Rees, Alltwn, Wales.

Set 1
Diadem (13)
Llanfair (44)
Hyfydol (15)
Rwy'n Canu (65)
Mawgan (105)

Set 2
Rhydygroes (18)
Einrhwg (90)
Rhys (89)
Nes i Dre (49)

Set 3
Dyddiau Dyn (118)*
Crimond (76)
Maesgwyn (10)
Calon Lan (66)

Set 4
Sandon (27)
In Memoriam (28)
Diolech i Ti (34)
Rachie (1)

The special music for the evening session will be sung by Cor Meibion Llanelli, The Llanelli Male Voice Choir. The

anthem for the session, *Dyddiau Dyn Sydd Fel Glaswelllyn*, will be directed by Tim Dyck.

The best are here including the North American favorite, *Blodwen* (as a tenor, I am pleased to see this one early in the singing).

The Ysgol Gan sessions during the weekend will be rehearsing some of the less familiar of these hymns, but there is now no excuse for you to come unprepared.

Take the hymns to your local society meeting and begin to practice. Even better, sing some at your own Gymnast Ganu. Then, we'll all be in our best voices.

Welsh Welcome Waits

The National Eisteddfod Council decision to move the Cymru a'r Byd "Welcoming Ceremony" to Welsh expatriates from the opening Saturday of the Eisteddfod to the Thursday of Eisteddfod week has been welcomed by Cymru a'r Byd/Wales International officials.

"This news will be welcomed by Welsh expatriates around the world," said Cymru a'r Byd Director, Gerwyn Morgan.

"This is a change we have been advocating for some time and we are delighted that the Eisteddfod Council has now recognised the very real difficulties that expatriates faced in recent years when the ceremony ... was held on the opening Saturday of the Eisteddfod," he said.

In the past, the ceremony had always been one of the Eisteddfod's most popular ceremonies. When it was held at the end of the week, Cymru a'r Byd had time to arrange for up to 400 exiles to attend the ceremony on the Eisteddfod stage.

Cymru a'r Byd Chairman, Eryl Hughes said, "It was always a very moving ceremony when the curtains were drawn back to reveal the expatriates whilst the vast crowd sang 'Unwaith eto'n Nghymru annwyl' (Once again in beloved

Wales) ... There was hardly a dry eye in the pavilion."

In recent years, with the changes to the festival programme, the ceremony had been relegated to the opening day and had lost much of its impact said Mr. Hughes. "In Llanellwedd last year we only had about 80 people on the stage for the ceremony," he added.

This year's welcoming ceremony will be more colorful and interesting than ever. The distinguished BBC presenter and producer Mr. R. Alun Evans has been commissioned by Cymru a'r Byd to prepare the new ceremony.

Chairman Eryl Hughes encouraged the Welsh all over the world to attend. "I want to appeal to all expatriates to try and make a very special effort to come to this year's National Eisteddfod in Neath, West Glamorgan. We have won the battle to get the ceremony moved to the middle of Eisteddfod week and we now want to prove to the Eisteddfod Council that we can once again make the ceremony one of the high spots of the week."

"Please come and support us. This is your ceremony. We will be delighted to welcome you in our Pavilion on the Eisteddfod field."

Plaid Cymru North America

Continued from page 1.

ful and democratic means for securing the independence of Wales.

The National Executive of Plaid Cymru recognized PCNA organisation on March 12, 1994 as a support group and has given the organization endorsement to speak and act on Plaid Cymru's behalf in North America.

Plaid Cymru North America will also take part in Plaid Cymru's national conventions.

PCNA has members in both Canada and the United States. They are seeking more members who share their aims. PCNA hopes to make North Americans, of Welsh descent and otherwise, understand the vital necessity for Wales to govern itself and to retain one of the oldest and most beautiful European languages.

That task involves communicating with as many people, and in as many ways, as possible. And it also means raising money and support to allow Plaid Cymru in Wales and London to pursue their common goals on the political stage.

A monthly newsletter, 'Nol Gartre,' is sent to supporters and includes news of PCNA's North American activities, about Plaid Cymru's activities in Wales, London and Europe, and other news from Wales and of Welsh interest. 'Nol Gartre' is a contraction of Yn ol Gartref meaning Back at Home.

Anyone willing and able to help, or anyone wanting more information on Plaid Cymru, or who has questions and comments, please write to: David Price, Plaid Cymru North America, 106-2nd Street West, Meadow Lake, Saskatchewan, Canada S9X 1C6.

Ontario Festival Wins Compliments

Continued from page 1.

it was refreshing to hear the sopranos, altos and contraltos in a congenial blend with the male singers. St. Paul's Presbyterian Church was full with OGGA members and admirers of good music. They were not disappointed.

Eleri Owen, a young contralto, entertained with a pleasing stage presence and excellent voice. At this time she works in a bank, but in the near future, many feel that she is destined for a higher advance into the realms of the performing arts as a vocalist.

The Saturday morning annual meeting, with Dorothy Jones presiding, proved meaningful in the many suggestions and fresh ideas offered for making the Ontario Gymnast Ganu Association even better than now.

It was a meeting that was truly harmonious in its deliberations, marked by happy feelings of belonging.

The selection of David Pugh Jr., a law enforcement officer in Oshawa, as president, was a popular choice. David has been a member and stalwart supporter of the OGGA for many years. His friends and fellow-members join in wishing him well.

Poetry readings, learning the words of Welsh hymns and the ever popular *Awr y Plant* under the direction of Stephen Jones

filled the afternoon hours.

Guests in large numbers filled the delightful ambience of the Ramada Inn ballroom for the annual banquet. Several executive officers of the WNGGA and NWAFF were in attendance.

Their presence was supportive of all who had worked so diligently to assure the festival's success. Peter Adams, M.P. for Peterborough was the guest speaker. He assured the assembled guests that the cultural heritage of Wales is highly regarded for its impact on Canadian society.

On Sunday, the two sessions of gymnast ganu in the beautiful St. Paul's Presbyterian Church, under the direction of Dr. Goronwy Wynne, brought in full congregations for excellent singing.

In his introductions, Dr. Goronwy Wynne, demonstrated his knowledge of the scripture as well as the music of each hymn. The singers responded magnificently to his every direction. The overall performance was inspiring. It could not have been much better. The hymns of Wales won new dimensions of respect and admiration in Canada, which was a tribute for both the conductor and the singers.

David Pugh presided over the morning session. Dorothy Jones presided in the afternoon. The ministers were the Rev. George Turner, pastor of St. Paul's

Presbyterian Church and Dr. R. Cerwyn Davies, recently retired pastor of Dewi Sent Welsh Church in Toronto.

During both sessions, Eleri Owen, was the guest soloist. Again, the rich resonance of her contralto voice was appreciated in the mix of congregational singing. Glenys Lightfoot from Wales was the guest organist.

Following the completion of each day's formal programs, Roy Morris, with a formidable contingent of singers from Ottawa, sang until the midnight hours. Their singing won warm commendations from the members of Cantorion Glan Alun and many others who appreciate the best of hymn singing under Roy's direction.

This talented conductor deserves the honor of leading at one of the WNGGA's festivals. We hope that will come very soon. Despite suffering from physical discomfitures, John Griffiths, the vocalist with the much admired tenor voice, proved that his vocal skills have not been impaired by his excellent rendering of "Sarah."

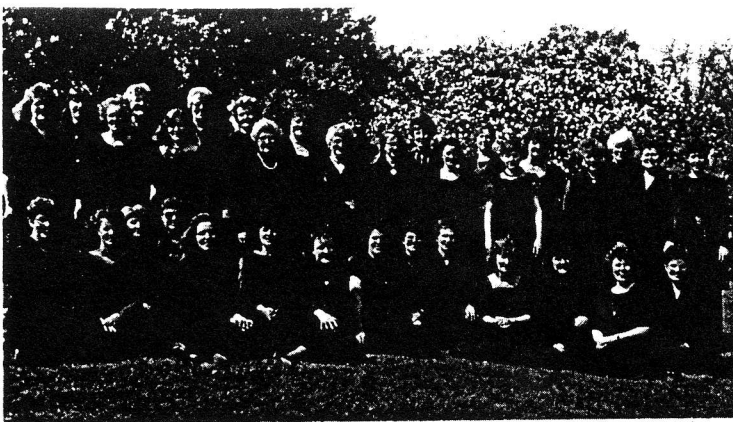
Everything had to finish, but the best of memories will remain. The finest ingredients of a culture and language contributed to the makings of a beautiful festival.

Next year the OGGA's annual festival will be welcomed to Ottawa, Canada's capital city.

Give Your Father the Gift That Gives All Year A NINNAU Gift Subscription

If you are a subscriber, you can give gift subscriptions at the special rate of \$10.00 US or \$13.00 Canadian per year

NINNAU PUBLICATIONS
11 Post Terrace
Basking Ridge, NJ 07920



Whitney Women's Chorale of Boise, Idaho will be competing at the Bellevue Eisteddfod. The Choral is comprised of 45 women ranging in age from junior high students to great-grandmothers. It was founded in 1982 by Constance Branton, who has a degree in church music from Westminster Choir College, Princeton, New Jersey. The accompanist is Carolyn Panko who studied organ at Southwestern University. Their repertoire includes songs in many different languages, but this will be their first in Cymraeg. Submitted by John Owen.

Gymanfa Conductors to Share Baton

By Alan Upshall

In considering the director for the National Gymanfa Ganu, the organizing committee wanted to break new ground. So they took a leaf from the traditions of the Pacific Northwest Gymanfa Ganu Association.

That society has routinely had two gymanfa directors, primarily to begin to develop budding directors and give them an opportunity to conduct at significant events, and to enable local directors to conduct on a more regional basis. The approach has been successful; new directors have been blooded and others introduced to a wider audience.

The existence of an afternoon

and an evening Gymanfa session at the National provides a good platform to extend this idea, and we have chosen two quite different pairs of people to direct and accompany the afternoon and evening sessions.

There is an opinion that Gymanfa musicians have to be Welsh-born or of recent Welsh origin to be able to bring out the emotion of the hymns. We do not believe that. There are many second and third generation Welsh in North America who are excellent musicians and who direct and accompany with enthusiasm. We are very pleased to give two of those the opportunity to work in a National.

The afternoon session of the

Bellevue Gymanfa will be directed by Mary Morris Mergenthal, editor of *Y Drych*. Mary is well-known to most North American Welsh, but probably not as a Gymanfa director. She has much experience on the podium and she conducts with enthusiasm and vigor.

Mary is very excited and honored at being asked and is equally pleased that she will be accompanied by another North American Welsh lady, Beverly Ratajak of Corvallis, Oregon. Beverly teaches music and plays organ for her church in Corvallis. She accompanies the annual Corvallis gymanfa and also accompanied (and directed four hymns) at the gymanfa at the Third Pacific Northwest Welsh weekend in Corvallis, Oregon.

The evening gymanfa session will be directed by D. Eifion Thomas, and accompanied by Alan S. Rees, of the Llanelli choir. Both are experienced in gymanfa artistry and are welcomed back after their great success at the National Gymanfa in Victoria, British Columbia, in 1990.

D. Eifion Thomas is a head teacher in Llanelli, Wales, and is well versed in Welsh hymns and music. He also teaches music and is an established tenor soloist. He has directed the Llanelli choir for nearly 20 years, and, under his direction, the Llanelli choir has risen to be one of the best in Wales. Eifion also has much experience at directing gymanfaedd.

Alan Rees received his degree in music from University of Wales, Cardiff, and specialized in organ and piano. He has accompanied several choral groups and soloists and is currently organ master and choir master at the Alltwn Independent Chapel Pontardawe in Wales. Alan has accompanied the Llanelli choir for the last seven years.

Both Eifion and Alan are eagerly anticipating their return to North America for the National Gymanfa Ganu.

The anthem at each Gymanfa session will be directed by Tim Dyck of Kirkland, Washington. Tim is a well-known west coast gymanfa director and annually directs the gymanfaedd in Seattle and Portland. Last year Tim directed in Delta, Pennsylvania and this year he will direct the gymanfa in Cambria, Calif. on March 6.

National Updates



The Logo

The logo for the 1994 National Gymanfa Ganu, Bellevue, September 1-4, 1994, was designed by Carolyn Bell, a member of the Puget Sound Welsh Association. When the association learned that they were going to host the 1994 National, they arranged a design competition.

Carolyn's winning logo was selected from the entries because of the strong connection that it made between the Pacific Northwest and Wales. Carolyn decided to move away from the dragon as a symbol of Wales and chose to focus instead on the daffodil, the floral emblem of Wales. The Pacific Northwest is globally known for its daffodils; it is one of the largest daffodil growing areas in the world, and bulbs are even exported to Holland. Each year daffodil festivals are held through the region.

The Pacific Northwest is also noted for its mountains, valleys and lakes, just like Wales; although there are no mountains as large as Mount Rainier in Wales.

Daffodils and mountains have been strikingly combined in the logo. We are very proud to have such a talented artist within the society.

Gymanfa Director's Forum

During the National Gymanfa Ganu weekend, there will be a special forum for musicians who have directed, or who have aspira-

tions to be a Gymanfa director. This forum is being organized by Tim Dyck, and is viewed as a way for directors to compare notes, give advice and discuss issues surrounding Gymanfaedd in North America. Interested persons can call Tim at 206-820-9675.

Market Place and Brochure Advertisements

We are now ready to accept requests from vendors for space in the Welsh Market Place. Contact person is Gwynne Dodge, 12822 NE 68th St., Kirkland, WA 98033. Tel: 206-827-1138.

The Market Place will be located adjacent to the Welsh Tea Room inside the headquarters hotel and will be open from the afternoon of Thursday, September 1st until noon on Sunday, September 4th.

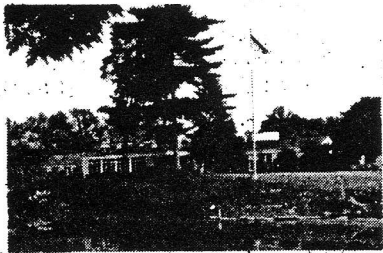
Correspondence for advertisements in the brochure should be to Puget Sound Welsh Association, Brochure, P.O. Box 19344, Seattle, WA 98109. Tel: 206-822-8872.

Eisteddfod

We have recently received further eisteddfod entries, so the competitions are nearly viable. Interestingly, we have an entry from a young soprano. We have always believed that an eisteddfod competition would be an ideal way to involve and interest youth in their Welsh heritage. If more youth entries arrive we will arrange separate competition for them. That would be a wonderful addition to the Welsh youth activities planned.

Send for your entry forms to Mari Wingate, 1339 Bellefield Lane, Bellevue, WA 98004. Tel: 206-454-799.

The Women's Welsh Clubs of America



Federated to Support the

WELSH HOME FOR THE AGED

Rocky River, Ohio



Second Floor Open
for Assisted Living



For information, please write to:

Administrator

THE WELSH HOME
22199 Center Ridge Road
Rocky River, Ohio 44116

(216) 331-0420

On Washington Churches

This is in regard to Mr. Hartmann's inquiry in the February issue of *Ninnau* on the Welsh churches of Washington State.

My father, the Rev. David Kendrick Roberts, was pastor of the Spokane Welsh Church from about 1913 to the summer of 1916 when he was called as a pastor to the Welsh churches of the Waukesha, Wisconsin area.

I recall hearing him tell that he had also conducted monthly Welsh services in the Coeur d'Alene, Idaho area among the Welsh miners.

I was born while my parents lived in Spokane. One of the

stories my father loved to tell was of my birth on a Sunday morning. My arrival caused his late arrival at the Sunday morning church service. As he walked down the aisle of the church, the congregation rose and sang "Praise God From Whom All Blessings Flow."

Some years ago, our son, who was working in Washington, attended a Welsh gathering in Spokane on March 1. There were still a few people in the audience who remembered "D.K."

EVALYN ROBERTS
VANDEROELDE
Naples, FL

CONTINUE THE TRADITION

Share your Welsh heritage
with friends & relatives

Send *NINNAU* Gift Subscriptions
for St. David's Day!

One year gift subscription
\$10.00 US or \$13.00 Canadian

NINNAU PUBLICATIONS
11 Post Terrace
Basking Ridge, NJ 07920

apparel. So say they synchronize both the Pacific Northwest and Wales.

Its center design is of daffodils in an original pattern by Judith. The daffodil is not only a national symbol of Wales, but is also an important agricultural product of Washington state. The daffodil growers in this region are nationally known for their beautiful flowers.

The quilt is in a medallion style; it is built out from the middle. The center daffodils are

apparel on some of the trees. Surrounding the trees is the final border, a traditional pattern called "delectable mountains." Judith redrafted this pattern to fit the quilt. Looking closely at the mountains, one can see deer. Judith has been quilting for 13 years; her work has been included in quilt pattern books published internationally and she has also taught quilting.

Judith has finished piecing

Wales International Plans Bellevue Visit

Cymru a'r Byd/Wales International leaders will be attending this year's 'Gymanfa Ganu' in Bellevue, Washington from September 1 to 4.

Cymru a'r Byd Chairman, Eryl Hughes and his wife Edwenna together with Director Gerwyn Morgan and his wife Eleri will be attending the four day festival.

This will be Mr. Morgan's first visit to the United States since taking over as Cymru a'r Byd Director last year. "We hope to have an exhibition about Cymru a'r Byd in Bellevue thanks to the assistance of the Wales Tourist Board. Both the Chairman and I are looking forward to meeting members and we hope to gain many new members for our organisation," he said.

Bryan Jones, Cymru a'r Byd

Secretary, represented the movement at last year's Gymanfa at Wilkes Barre. Cymru a'r Byd/Wales International are Life Members of the Gymanfa Ganu Association.

Seattle

By Ohwyn Ellis

The Seattle Welsh Women's Club held their last Luncheon Meeting of the 1993-1994 season at the Black Diamond Bakery and Deli on May 7th. Installation of Officers for the 1994-1995 season are: Jackie Cedarholm, president; Chris Reese, vice-president; Mary Powell, treasurer; Ohwyn Ellis, Secretary.

The next meeting will be held on September 10th.

By George Jones

In our last report, the Welsh national rugby squad were getting ready for their extended rugby tour of Portugal, Spain, Canada and the Pacific. I hope you're ready for good news, because I have lots of it.

As Five Nations champions, head-coach Allan Davies stated that they were not going to be complacent in their World Cup qualifying matches against Portugal and Spain, and judging from the results he was not kidding. By posting a World Cup record 102 points in its qualifying win over Portugal 102 to 11, May 17, Wales was one step close to its invitation to the World Cup.

Welsh flanker Hemi Taylor earned his first cap and a try, his try pushing Wales over the century mark. In scoring 16 tries and 102 points, Wales eclipsed both its previous test point record (55 against Japan in 1993) and the World Cup record (74 scored by New Zealand in 1987).

On May 21, Wales confirmed their berth by defeating Spain 54 - 0 at Madrid. Wales tallied seven tries, led by captain Ieuan Evans' hat trick. Neil Jenkins adding a further 19 to his already impressive total.

After a brief respite for celebration, however, Wales will work to secure a good World Cup seeding. Wales looks ahead to tests with Romania and Italy to secure No. 1 ranking in Europe and a kinder straw in the World Cup.

And now it's on to Canada and revenge. However, on June 4th, Canada once again upset world

Rugby Report

rugby rankings by the 18 - 16 defeat of France at Nepeans Twin Elm Park just outside Ottawa. It means that Canada has overcome Five Nations champion Wales (November 10, 1993) and now France, rated fifth in the world, in seven short months.

On June 7, the Welsh squad arrived at our Brantford Harlequin R.F.C. ground at about 9:15 am for a day's training and the intensity that they showed during that morning and afternoon made me glad that I was not going to face them on the following day.

I spoke to Rupert Moon, scrum half, who is on the staff of the new Welsh Rugby magazine, and suggested he post an advertisement in Ninnau. I subscribe to the magazine and heartily endorse it.

My 20-year-old grandson, home from Waterloo University and working on the grounds and clubhouse as part of a summer job, was thrilled to be barbecuing for such a distinguished group.

Then on to neighboring Hamilton, Ontario, for the Wednesday evening game against the Canada team. Canada fielded a truly A team, that is players not regarded as first choice for the National team, whereas Wales fielded nine of its test players.

Wales had strong support in the crowd which included yours truly and brother Tom, both of us with large Welsh dragon flags and a huge leek each.

Maybe it was the leeks that put Jenkins the Boot off his kicking, missing his first three shots at penalty goals, all from

very makeable positions, whereas his Canadian opposite Bob Ross was on the mark, and early in the second half Canada was ahead 12 - 10.

However, the slight breeze was now at the Welshmen's backs and more and more pressure was being applied to Canada and Wales was soon to regain the advantage. The Five Nations champions allowed a converted Scott McKinnon try but picked up three of their own, the prettiest coming when Paul xxx and Neil Jenkins combined to put away full back Tony Clement in the corner. The final score: Wales 28, Canada A 19.

June 11, 1994 — the show-down. This game was a much more flowing and exciting game to watch than the game against Canada A' side. In that game Wales conceded penalties and were fortunate to come out of the top 28 - 19 with 3 second half tries. The goal kickers take at least 40 seconds to set and kick for goal and it destroys both the players' and spectators' interest in the game.

The Test gave was a much better disciplined side and with Rupert Moon at scrum half had better control of the side and the game. Wales clung to a 17 - 10 halftime advantage, but came out for the second half with the 26 - 24 Cardiff loss in mind. Wales scored 16 second-half points while shutting out the upstart opponent, making the final score 33 - 15, and lots to cheer about.

Hopefully we will have the Pacific scores for the next issue.

R R R

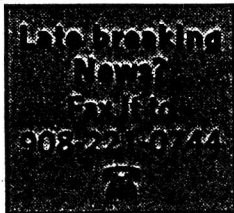
The Harp and Dragon

25 Madison St., Dept. N, Cortland, NY 13045
Tel: 607-756-7372 * 10-10 daily

Help Wanted:

Sales help needed in the Welsh Marketplace during the National Gymanfa in Bellevue. Interested individuals or societies should call or write to The Harp and Dragon.

"Viewing the Gymanfa from behind a table in the Marketplace is quite exciting," says proprietor Anne Habermehl. "You get to see everybody because they all come past you sooner or later."



YR ENFYS

Quarterly publication of Welsh expatriates the world over. Your link with Wales and the overseas Welsh communities. Bilingual content.

Published by Wales International with the generous assistance of the Wales Tourist Board and the Welsh Office.

For further information contact:
J.B. Jones, 7 Victoria Rd., Old Colwyn
Chwyd, LL29 9SN, Wales, G.B.